

HIGH TECHNOLOGY FOR LIFE



STAINLESS STEEL SUBMERSIBLE PUMPS



HIGH TECHNOLOGY FOR LIFE

Well Stainless Steel Submersible Pumps

Technical Datasheet Catalogue

INDEX

02 - 03	SPS 10 Submersible Pump (08 to 24 stage)
04 - 05	SPS 10 Submersible Pump (25 to 42 stage)
06 - 07	SPS 10 Submersible Pump (43 to 60 stage)
08 - 09	SPS 17 Submersible Pump (07 to 27 stage)
10 - 11	SPS 17 Submersible Pump (28 to 43 stage)
12 - 13	SPS 17 Submersible Pump (44 to 60 stage)
14 - 15	SPS 30 Submersible Pump (04 to 20 stage)
16 - 17	SPS 30 Submersible Pump (21 to 37 stage)
18 - 19	SPS 30 Submersible Pump (38 to 54 stage)
20 - 21	SPS 36 Submersible Pump (01 to 17 stage)
22 - 23	SPS 36 Submersible Pump (18 to 36 stage)
24 - 25	SPS 646 Submersible Pump (03 to 19 stage)
26 - 27	SPS 646 Submersible Pump (20 to 33 stage)
28 - 29	SPS 660 Submersible Pump (02 to 17 stage)
30 - 31	SPS 660 Submersible Pump (18 to 30 stage)
32 - 33	SPS 877 Submersible Pump (01 to 22 stage)
34 - 35	SPS 895 Submersible Pump (01 to 20 stage)
36 - 37	SPS 8105 Submersible Pump (01 to 20 stage)
38 - 39	SPS 110 Submersible Pump (01 to 20 stage)
40 - 41	SPS 125 Submersible Pump (01 to 14 stage)
42 - 43	SPS 160 Submersible Pump (01 to 10 stage)
44 - 45	SPS 160 Submersible Pump (11 to 16 stage)
46 - 47	SPS 210 Submersible Pump (01 to 10 stage)

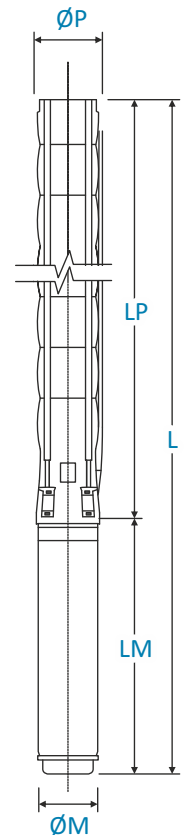
Technical Datasheets

SPS 10 Dimension and Weight Table

Product Code	Stage	Motor		Dimensions					Weight		
		kW	HP	L	LM	LP	ØM	ØP	Motor	Pump	Total
SPS 10/08	8	4	5,5	1402	753	623	142	132	40	15	55
SPS 10/09	9	4	5,5	1463	814	687	142	132	40	17	57
SPS 10/10	10	4	5,5	1523	874	751	142	132	40	18	58
SPS 10/11	11	4	5,5	1584	935	815	142	132	40	20	60
SPS 10/12	12	5,5	7,5	1673	995	879	142	132	43.5	21	64.5
SPS 10/13	13	5,5	7,5	1734	1056	943	142	132	43.5	23	66.5
SPS 10/14	14	5,5	7,5	1794	1116	1.007	142	132	43.5	24	67.5
SPS 10/15	15	5,5	7,5	1855	1177	1.071	142	132	43.5	26	69.5
SPS 10/16	16	7,5	10	1995	1237	1.135	142	132	50	27	77
SPS 10/17	17	7,5	10	2056	1298	1.199	142	132	50	28	78
SPS 10/18	18	7,5	10	2116	1358	1.263	142	132	50	30	80
SPS 10/19	19	7,5	10	2177	1419	1.327	142	132	50	31	81
SPS 10/20	20	9,3	12,5	2237	1479	1.391	142	132	50	33	83
SPS 10/21	21	9,3	12,5	2298	1540	1.455	142	132	50	34	84
SPS 10/22	22	9,3	12,5	2400	1600	1.519	142	132	55	36	91
SPS 10/23	23	9,3	12,5	2461	1661	1.583	142	132	55	37	92
SPS 10/24	24	9,3	12,5	2521	1721	1.647	142	132	55	39	94

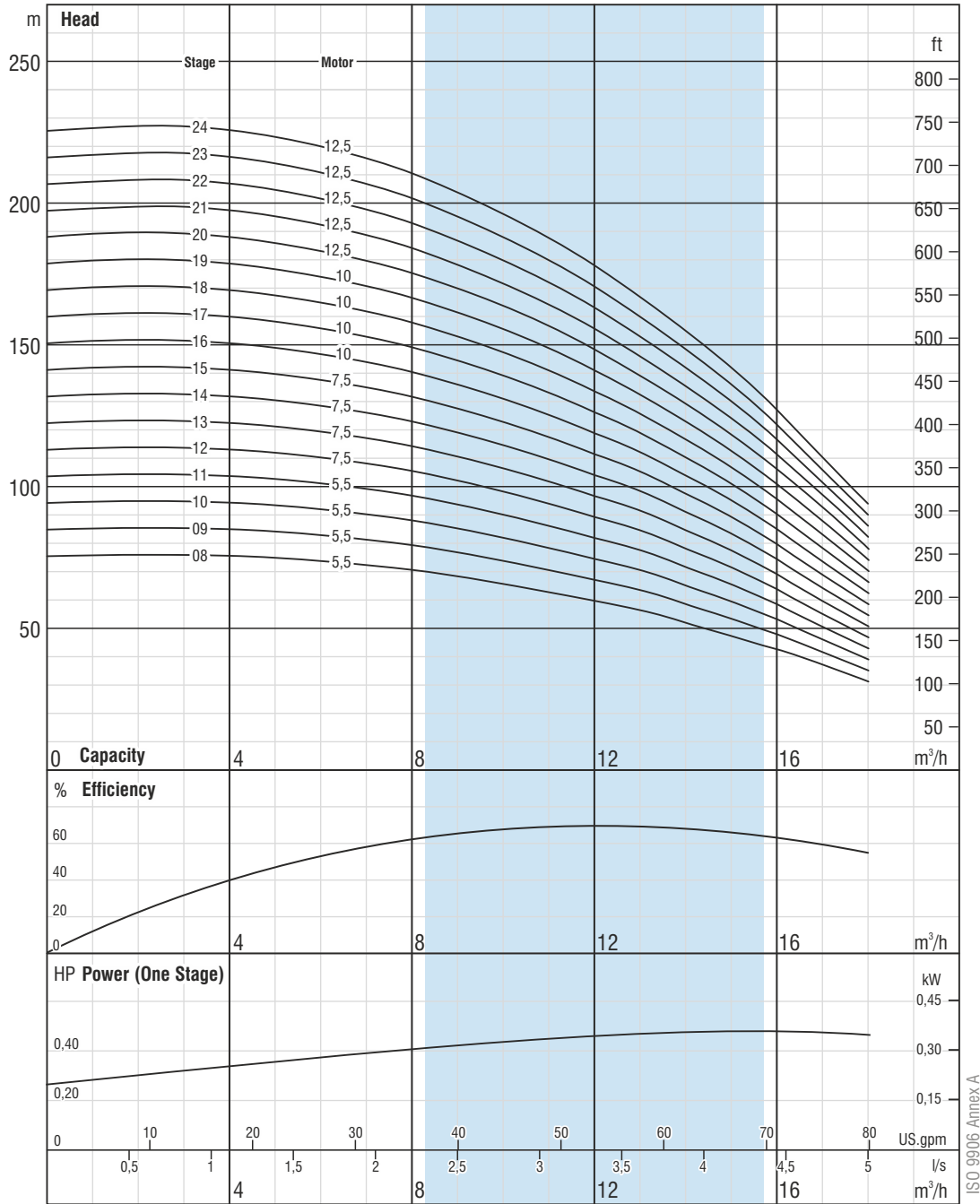
SPS 10 Performance Table

Product Code	Stage	Motor		Current	m³/h	Head (meter)					
		kW	HP			0	3,6	7,2	10,8	14,4	16
SPS 10/08	8	4	5,5	10,2	75	75	71	63	49	42	31
SPS 10/09	9	4	5,5	10,2	84	84	80	71	56	47	35
SPS 10/10	10	4	5,5	10,2	93	93	89	79	62	52	39
SPS 10/11	11	4	5,5	10,2	103	103	98	86	68	57	42
SPS 10/12	12	5,5	7,5	13,3	112	112	107	94	74	63	46
SPS 10/13	13	5,5	7,5	13,3	121	121	115	102	80	68	50
SPS 10/14	14	5,5	7,5	13,3	131	130	124	110	87	73	54
SPS 10/15	15	5,5	7,5	13,3	140	140	133	118	93	78	58
SPS 10/16	16	7,5	10	17,2	149	149	142	126	99	84	62
SPS 10/17	17	7,5	10	17,2	159	158	151	134	105	89	65
SPS 10/18	18	7,5	10	17,2	168	168	160	141	111	94	69
SPS 10/19	19	7,5	10	17,2	177	177	169	149	118	99	73
SPS 10/20	20	9,3	12,5	20,8	187	186	178	157	124	105	77
SPS 10/21	21	9,3	12,5	20,8	196	196	186	165	130	110	81
SPS 10/22	22	9,3	12,5	20,8	205	205	195	173	136	115	85
SPS 10/23	23	9,3	12,5	20,8	215	214	204	181	142	120	89
SPS 10/24	24	9,3	12,5	20,8	224	224	213	189	148	125	92



Well Stainless Steel Submersible Pumps

SPS 10 Performance Curve (08 to 24 stage)



The right to change design and all specifications without prior notice reserved.

SPS 10 - 50Hz

Features

- Rpm :2900
- Rotation :CCW
- Maximum sand content is 50 gr/m³
- 2 ½" inside threaded outlet connection diameter

Materials

Diffuser & Impeller:
AISI 304L - Stainless Steel

Pump Shaft / Coupling:
AISI 420 - Stainless Steel

Strainer:
AISI 304 - Stainless Steel

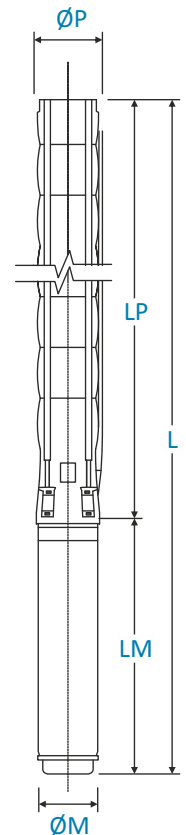
Technical Datasheets

SPS 10 Dimension and Weight Table

Product Code	Stage	Motor		Dimensions					Weight		
		kW	HP	L	LM	LP	ØM	ØP	Motor	Pump	Total
SPS 10/25	25	9,3	12,5	2582	800	1782	142	132	55	40	95
SPS 10/26	26	9,3	12,5	2642	800	1842	142	132	55	41	96
SPS 10/27	27	11	15	2754	851	1903	142	132	60	43	103
SPS 10/28	28	11	15	2814	851	1963	142	132	60	44	104
SPS 10/29	29	11	15	2875	851	2024	142	132	60	46	106
SPS 10/30	30	11	15	2935	851	2084	142	132	60	47	107
SPS 10/31	31	13	17,5	3056	911	2145	142	132	65	49	114
SPS 10/32	32	13	17,5	3116	911	2205	142	132	65	50	115
SPS 10/33	33	13	17,5	3177	911	2266	142	132	65	52	117
SPS 10/34	34	13	17,5	3237	911	2326	142	132	65	53	118
SPS 10/35	35	13	17,5	3298	911	2387	142	132	65	54	119
SPS 10/36	36	13	17,5	3358	911	2447	142	132	65	56	121
SPS 10/37	37	13	17,5	3419	911	2508	142	132	65	57	122
SPS 10/38	38	15	20	3541	973	2568	142	132	72	59	131
SPS 10/39	39	15	20	3602	973	2629	142	167	72	91	163
SPS 10/40	40	15	20	3662	973	2689	142	167	72	92	164
SPS 10/41	41	15	20	3723	973	2750	142	167	72	94	166
SPS 10/42	42	18,5	25	3816	1006	2810	142	167	76	96	172

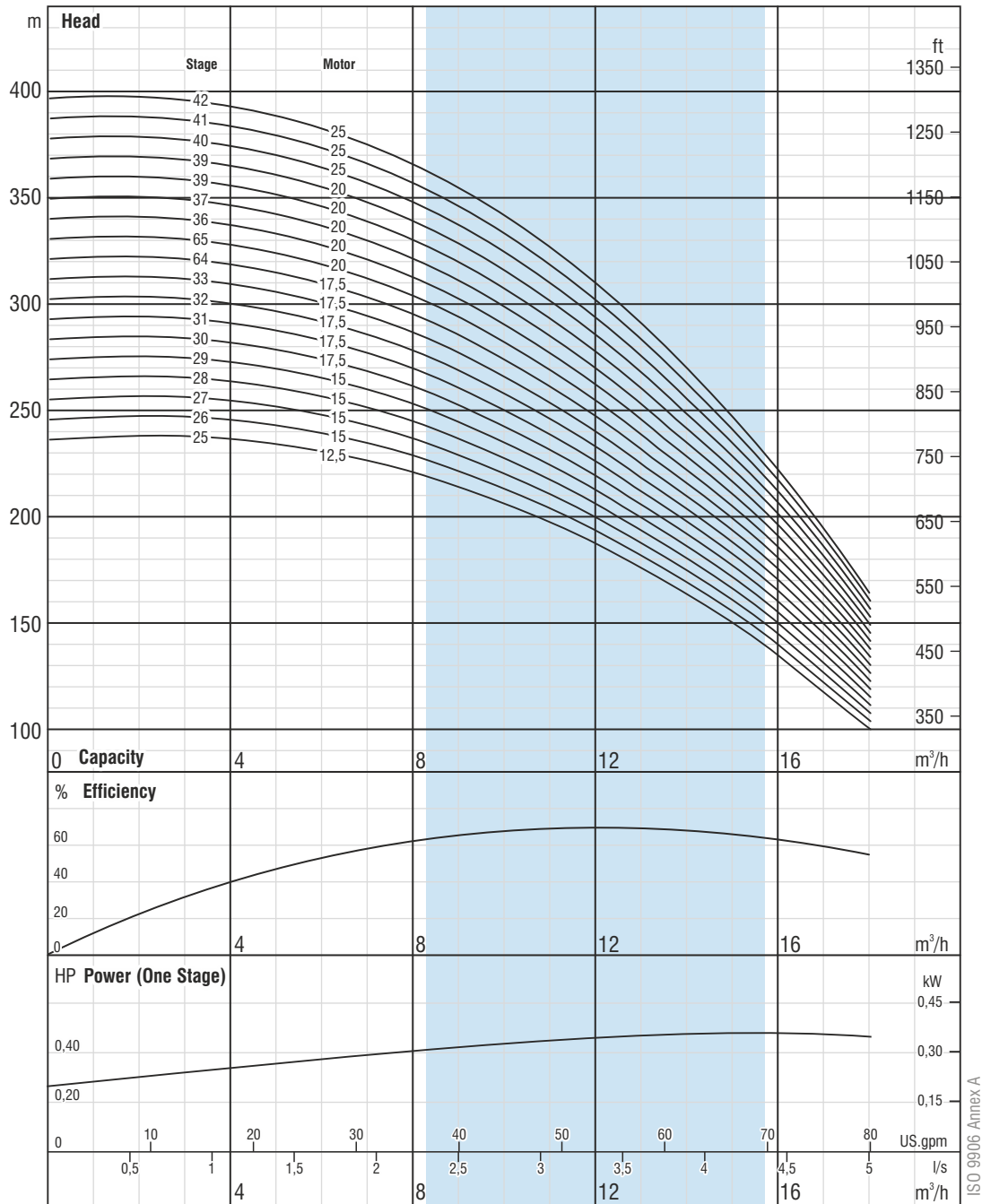
SPS 10 Performance Table

Product Code	Stage	Motor		Current	m³/h	Head (meter)						
		kW	HP			0	3,6	7,2	10,8	14,4	16	18
SPS 10/25	25	9,3	12,5	20,8	0	233	233	222	197	155	131	96
SPS 10/26	26	11	15	20,8	1	243	242	231	204	161	136	100
SPS 10/27	27	11	15	23,7	2	252	252	240	212	167	141	104
SPS 10/28	28	11	15	23,7	3	261	261	249	220	173	146	108
SPS 10/29	29	11	15	23,7	4	270	270	258	228	179	152	112
SPS 10/30	30	13	17,5	23,7	4,4	280	280	266	236	186	157	116
SPS 10/31	31	13	17,5	28,7	5,5	289	289	275	244	192	162	119
SPS 10/32	32	13	17,5	28,7	0	298	298	284	252	198	167	123
SPS 10/33	33	13	17,5	28,7	1	308	308	293	259	204	172	127
SPS 10/34	34	13	17,5	28,7	2	317	317	302	267	210	178	131
SPS 10/35	35	15	20	28,7	3	326	326	311	275	216	183	135
SPS 10/36	36	15	20	28,7	4	336	336	320	283	223	188	139
SPS 10/37	37	15	20	28,7	4,4	345	345	329	291	229	193	143
SPS 10/38	38	15	20	33,1	5,5	354	354	337	299	235	199	146
SPS 10/39	39	15	20	33,1	0	364	364	346	307	241	204	150
SPS 10/40	40	19	25	33,1	1	373	373	355	314	247	209	154
SPS 10/41	41	19	25	33,1	2	382	382	364	322	254	214	158
SPS 10/42	42	19	25	41,8	3	392	391	373	330	260	220	162



Well Stainless Steel Submersible Pumps

SPS 10 Performance Curve (25 to 42 stage)



The right to change design and all specifications without prior notice reserved.

SPS 10 - 50Hz

Features

- Rpm :2900
- Rotation :CCW
- Maximum sand content is 50 gr/m³
- 2 ½" inside threaded outlet connection diameter

Materials

Diffuser & Impeller:
AISI 304L - Stainless Steel

Pump Shaft / Coupling:
AISI 420 - Stainless Steel

Strainer:
AISI 304 - Stainless Steel

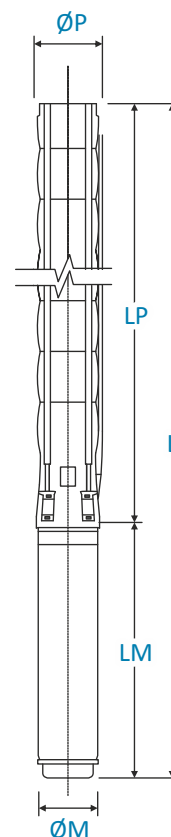
Technical Datasheets

SPS 10 Dimension and Weight Table

Product Code	Stage	Motor		Dimensions					Weight		
		kW	HP	L	LM	LP	ØM	ØP	Motor	Pump	Total
SPS 10/43	43	18,5	25	3877	1006	2871	142	167	76	98	174
SPS 10/44	44	18,5	25	3937	1006	2931	142	167	76	100	176
SPS 10/45	45	18,5	25	3998	1006	2992	142	167	76	101	177
SPS 10/46	46	18,5	25	4058	1006	3052	142	167	76	103	179
SPS 10/47	47	18,5	25	4119	1006	3113	142	167	76	105	181
SPS 10/48	48	18,5	25	4179	1006	3173	142	167	76	107	183
SPS 10/49	49	18,5	25	4240	1006	3234	142	167	76	108	184
SPS 10/50	50	22	30	4400/4184	1106/890	3294	142/172	167	87/86	110	197/196
SPS 10/51	51	22	30	4461/4245	1106/890	3355	142/172	167	87/86	112	199/198
SPS 10/52	52	22	30	4521/4305	1106/890	3415	142/172	167	87/86	114	201/200
SPS 10/53	53	22	30	4582/4366	1106/890	3476	142/172	167	87/86	116	203/202
SPS 10/54	54	22	30	4642/4426	1106/890	3536	142/172	167	87/86	117	204/203
SPS 10/55	55	22	30	4703/4487	1106/890	3597	142/172	167	87/86	119	206/205
SPS 10/56	56	22	30	4763/4547	1106/890	3657	142/172	167	87/86	121	208/207
SPS 10/57	57	22	30	4824/4608	1106/890	3718	142/172	167	87/86	123	210/209
SPS 10/58	58	22	30	4884/4668	1106/890	3778	142/172	167	87/86	125	212/211
SPS 10/59	59	22	30	4945/4729	1106/890	3839	142/172	167	87/86	126	213/212
SPS 10/60	60	22	30	5005/4789	1106/890	3899	142/172	167	87/86	128	215/214

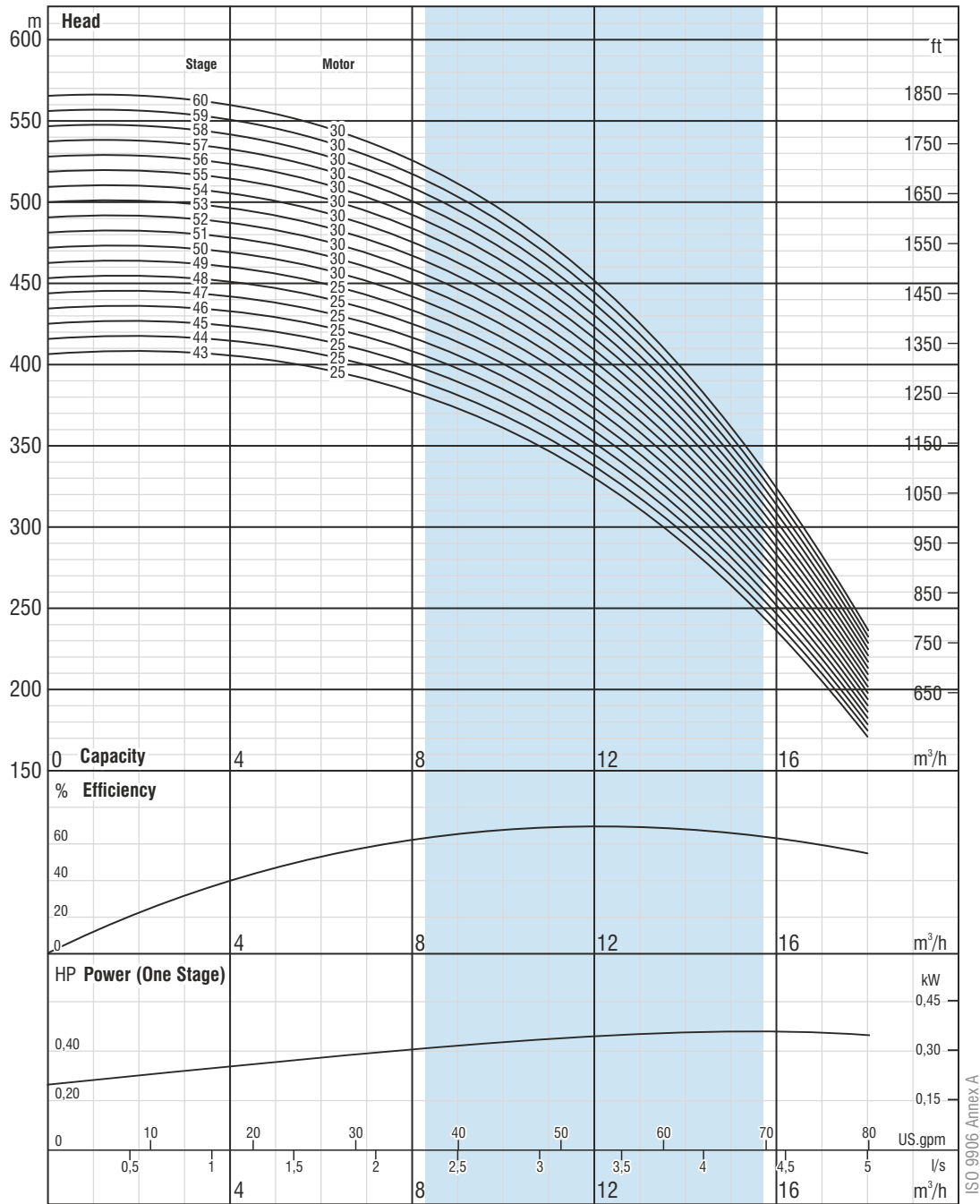
SPS 10 Performance Table

Product Code	Stage	Motor		Current	m³/h	Head (meter)						
		kW	HP			0	3,6	7,2	10,8	14,4	16	18
SPS 10/43	43	18,5	25	41,8	0	401	401	382	338	266	225	166
SPS 10/44	44	18,5	25	41,8	1	410	410	391	346	272	230	169
SPS 10/45	45	18,5	25	41,8	2	420	419	400	354	278	235	173
SPS 10/46	46	18,5	25	41,8	3	429	429	408	362	285	240	177
SPS 10/47	47	18,5	25	41,8	4	438	438	417	369	291	246	181
SPS 10/48	48	18,5	25	41,8	5	448	447	426	377	297	251	185
SPS 10/49	49	18,5	25	41,8	6	457	457	435	385	303	256	189
SPS 10/50	50	22	30	48,5	7	466	466	444	393	309	261	193
SPS 10/51	51	22	30	48,5	8	476	475	453	401	315	267	196
SPS 10/52	52	22	30	48,5	9	485	485	462	409	322	272	200
SPS 10/53	53	22	30	48,5	10	494	494	471	417	328	277	204
SPS 10/54	54	22	30	48,5	11	504	503	480	424	334	282	208
SPS 10/55	55	22	30	48,5	12	513	513	488	432	340	287	212
SPS 10/56	56	22	30	48,5	13	522	522	497	440	346	293	216
SPS 10/57	57	22	30	48,5	14	532	531	506	448	353	298	220
SPS 10/58	58	22	30	48,5	15	541	541	515	456	359	303	223
SPS 10/59	59	22	30	48,5	16	550	550	524	464	365	308	227
SPS 10/60	60	22	30	48,5	17	560	559	533	472	371	314	231



Well Stainless Steel Submersible Pumps

SPS 10 Performance Curve (43 to 60 stage)



The right to change design and all specifications without prior notice reserved.

SPS 10 - 50Hz

Features

- Rpm :2900
- Rotation :CCW
- Maximum sand content is 50 gr/m³
- 2 ½" inside threaded outlet connection diameter

Materials

Diffuser & Impeller:
AISI 304L - Stainless Steel

Pump Shaft / Coupling:
AISI 420 - Stainless Steel

Strainer:
AISI 304 - Stainless Steel

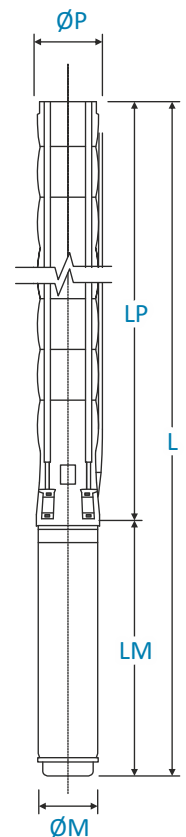
Technical Datasheets

SPS 17 Dimension and Weight Table

Product Code	Stage	Motor		Dimensions					Weight		
		kW	HP	L	LM	LP	ØM	ØP	Motor	Pump	Total
SPS 17/07	7	4	5,5	1342	649	693	142	132	40	14	54
SPS 17/08	8	5,5	7,5	1431	678	753	142	132	43.5	16	59.5
SPS 17/09	9	5,5	7,5	1492	678	814	142	132	43.5	17	60.5
SPS 17/10	10	5,5	7,5	1552	678	874	142	132	43.5	18	61.5
SPS 17/11	11	7,5	10	1693	758	935	142	132	50	20	70
SPS 17/12	12	7,5	10	1753	758	995	142	132	50	21	71
SPS 17/13	13	7,5	10	1814	758	1056	142	132	50	23	73
SPS 17/14	14	7,5	10	1874	758	1116	142	132	50	24	74
SPS 17/15	15	9,3	12,5	1977	800	1177	142	132	55	26	81
SPS 17/16	16	9,3	12,5	2037	800	1237	142	132	55	27	82
SPS 17/17	17	9,3	12,5	2098	800	1298	142	132	55	29	84
SPS 17/18	18	11	15	2209	851	1358	142	132	60	30	90
SPS 17/19	19	11	15	2270	851	1419	142	132	60	31	91
SPS 17/20	20	11	15	2330	851	1479	142	132	60	33	93
SPS 17/21	21	13	17,5	2451	911	1540	142	132	65	34	99
SPS 17/22	22	13	17,5	2511	911	1600	142	132	65	36	101
SPS 17/23	23	13	17,5	2572	911	1661	142	132	65	37	102
SPS 17/24	24	13	17,5	2632	911	1721	142	132	65	39	104
SPS 17/25	25	15	20	2755	973	1782	142	132	72	40	112
SPS 17/26	26	15	20	2815	973	1842	142	132	72	42	114
SPS 17/27	27	15	20	2876	973	1903	142	132	72	43	115

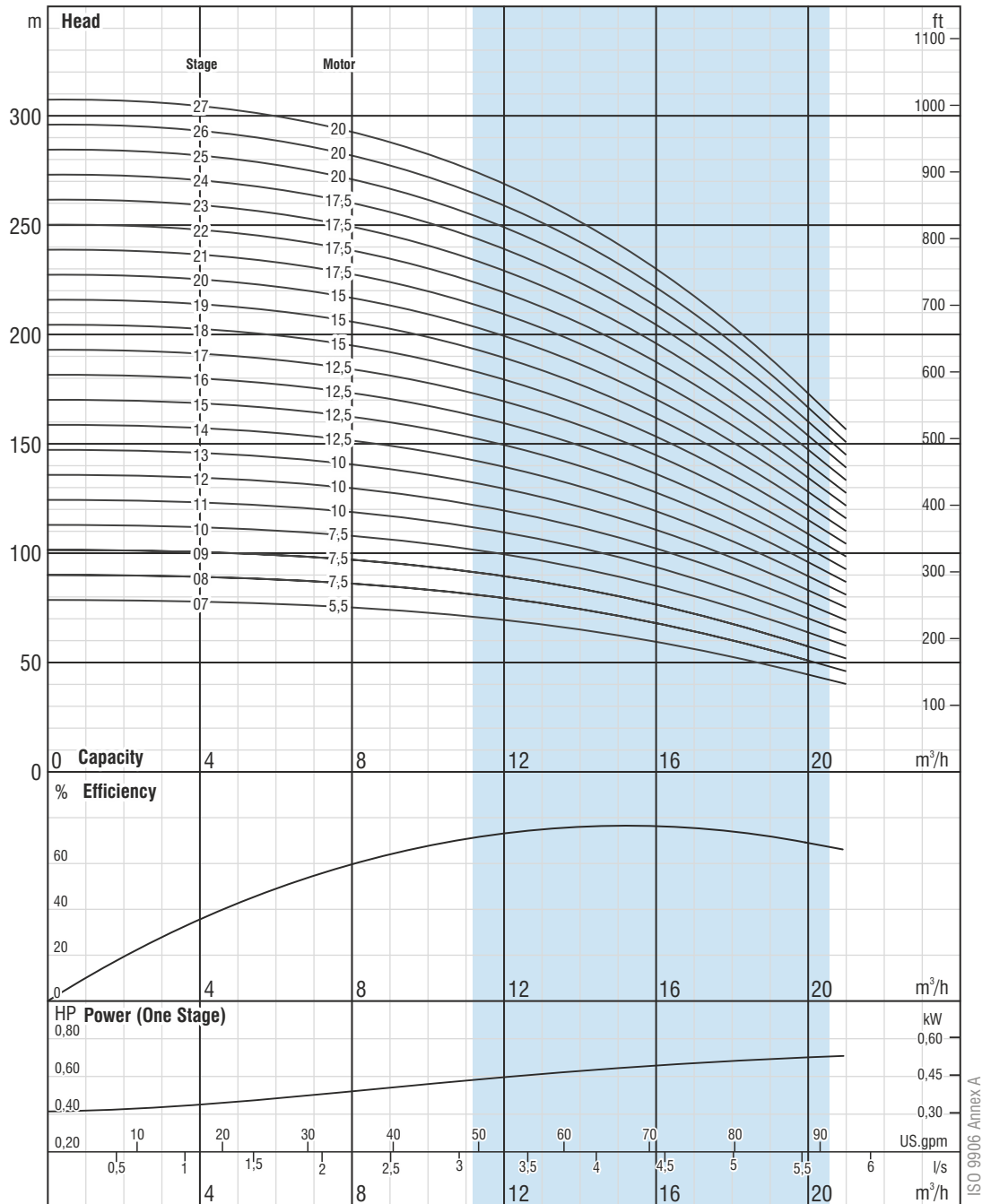
SPS 17 Performance Table

Product Code	Stage	Motor		Current	m³/h	Head (meter)									
		kW	HP			0	6	8	10	12	14	16	18	20	
SPS 17/07	7	4	5,5	10,2	0	81	79	78	75	72	67	61	54	46	
SPS 17/08	8	5,5	7,5	13,3	1,7	93	91	89	86	82	76	70	62	53	
SPS 17/09	9	5,5	7,5	13,3	2,2	104	102	100	97	92	86	78	69	59	
SPS 17/10	10	5,5	7,5	13,3	2,8	116	113	111	107	102	95	87	77	66	
SPS 17/11	11	7,5	10	17,2	3,3	127	125	122	118	112	105	96	85	72	
SPS 17/12	12	7,5	10	17,2	3,9	139	136	133	129	123	115	104	92	79	
SPS 17/13	13	7,5	10	17,2	4,4	151	147	144	140	133	124	113	100	85	
SPS 17/14	14	7,5	10	17,2	5	162	159	155	150	143	134	122	108	92	
SPS 17/15	15	9,3	12,5	20,8	5,6	174	170	166	161	153	143	131	115	99	
SPS 17/16	16	9,3	12,5	20,8	0	185	182	178	172	164	153	139	123	105	
SPS 17/17	17	9,3	12,5	20,8	1,7	197	193	189	182	174	162	148	131	112	
SPS 17/18	18	11	15	23,7	2,2	208	204	200	193	184	172	157	139	118	
SPS 17/19	19	11	15	23,7	2,8	220	216	211	204	194	181	165	146	125	
SPS 17/20	20	11	15	23,7	3,3	232	227	222	215	204	191	174	154	131	
SPS 17/21	21	13	17,5	28,7	3,9	243	238	233	225	215	200	183	162	138	
SPS 17/22	22	13	17,5	28,7	4,4	255	250	244	236	225	210	191	169	145	
SPS 17/23	23	13	17,5	28,7	5	266	261	255	247	235	220	200	177	151	
SPS 17/24	24	13	17,5	28,7	5,6	278	272	266	258	245	229	209	185	158	
SPS 17/25	25	15	20	33,1	0	289	284	277	268	256	239	218	192	164	
SPS 17/26	26	15	20	33,1	1,7	301	295	289	279	266	248	226	200	171	
SPS 17/27	27	15	20	33,1	2,2	313	306	300	290	276	258	235	208	177	



Well Stainless Steel Submersible Pumps

SPS 17 Performance Curve (07 to 27 stage)



The right to change design and all specifications without prior notice reserved.

SPS 17 - 50Hz

Features

- Rpm :2900
- Rotation :CCW
- Maximum sand content is 50 gr/m³
- 2 ½" inside threaded outlet connection diameter

Materials

Diffuser & Impeller:
AISI 304L - Stainless Steel

Pump Shaft / Coupling:
AISI 420 - Stainless Steel

Strainer:
AISI 304 - Stainless Steel

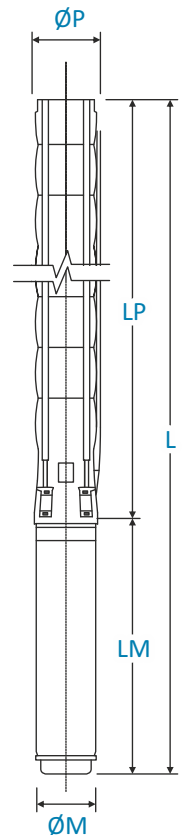
Technical Datasheets

SPS 17 Dimension and Weight Table

Product Code	Stage	Motor		Dimensions					Weight		
		kW	HP	L	LM	LP	ØM	ØP	Motor	Pump	Total
SPS 17/28	28	15	20	2936	973	1963	142	132	72	45	117
SPS 17/29	29	18,5	25	3030	1006	2024	142	132	76	46	122
SPS 17/30	30	18,5	25	3090	1006	2084	142	132	76	47	123
SPS 17/31	31	18,5	25	3151	1006	2145	142	132	76	49	125
SPS 17/32	32	18,5	25	3211	1006	2205	142	132	76	50	126
SPS 17/33	33	18,5	25	3272	1006	2266	142	132	76	52	128
SPS 17/34	34	18,5	25	3332	1006	2326	142	132	76	53	129
SPS 17/35	35	22	30	3493/3277	1106/890	2387	142/172	132	87/86	55	142/141
SPS 17/36	36	22	30	3553/3337	1106/890	2447	142/172	132	87/86	56	143/142
SPS 17/37	37	22	30	3614/3398	1106/890	2508	142/172	132	87/86	58	145/144
SPS 17/38	38	22	30	3674/3458	1106/890	2568	142/172	132	87/86	59	146/145
SPS 17/39	39	22	30	3735/3519	1106/890	2629	142/172	167	87/86	60	147/146
SPS 17/40	40	22	30	3795/3579	1106/890	2689	142/172	167	87/86	62	149/148
SPS 17/41	41	22	30	3856/3640	1106/890	2750	142/172	167	87/86	63	150/149
SPS 17/42	42	26,5	35	4027/3750	1217/940	2810	142/172	167	98/91	65	163/156
SPS 17/43	43	26,5	35	4088/3811	1217/940	2871	142/172	16	98/91	98	196/189

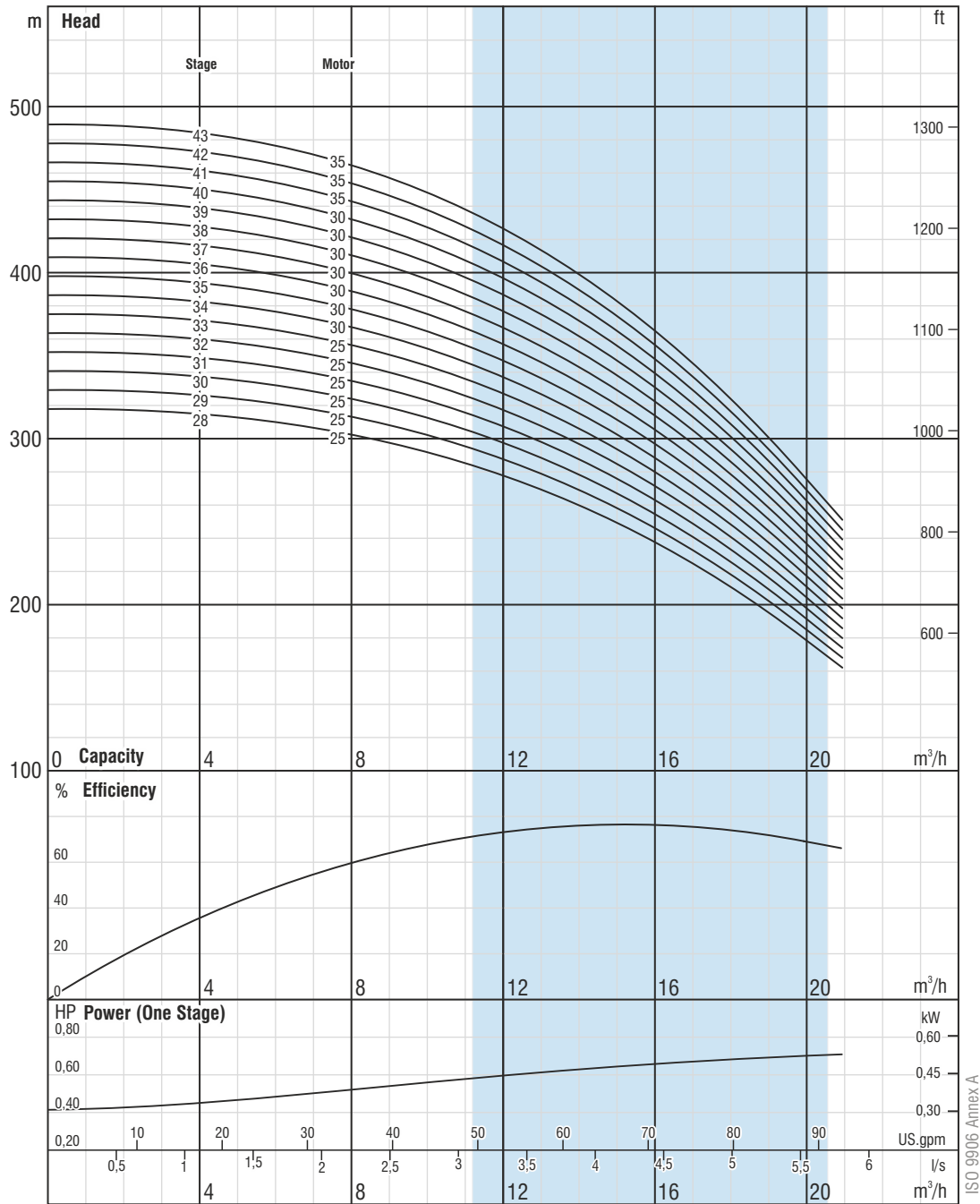
SPS 17 Performance Table

Product Code	Stage	Motor		Current	m³/h	Head (meter)																	
		kW	HP			0	6	8	10	12	14	16	18	20									
SPS 17/28	28	15	20	33,1	l/s	0	1,7	2,2	2,8	3,3	3,9	4,4	5	5,6	324	318	311	301	286	267	244	216	184
SPS 17/29	29	18,5	25	41,8											336	329	322	311	296	277	252	223	190
SPS 17/30	30	18,5	25	41,8											347	340	333	322	307	286	261	231	197
SPS 17/31	31	18,5	25	41,8											359	352	344	333	317	296	270	239	204
SPS 17/32	32	18,5	25	41,8											371	363	355	343	327	305	278	246	210
SPS 17/33	33	18,5	25	41,8											382	374	366	354	337	315	287	254	217
SPS 17/34	34	18,5	25	41,8											394	386	377	365	348	325	296	262	223
SPS 17/35	35	22	30	48,5											405	397	388	376	358	334	305	269	230
SPS 17/36	36	22	30	48,5											417	408	400	386	368	344	313	277	236
SPS 17/37	37	22	30	48,5											428	420	411	397	378	353	322	285	243
SPS 17/38	38	22	30	48,5											440	431	422	408	388	363	331	293	250
SPS 17/39	39	22	30	48,5											452	442	433	419	399	372	339	300	256
SPS 17/40	40	22	30	48,5											463	454	444	429	409	382	348	308	263
SPS 17/41	41	22	30	48,5											475	465	455	440	419	391	357	316	269
SPS 17/42	42	26,5	35	56,4											486	477	466	451	429	401	365	323	276
SPS 17/43	43	26,5	35	56,4											498	488	477	462	440	410	374	331	282



Well Stainless Steel Submersible Pumps

SPS 17 Performance Curve (28 to 43 stage)



The right to change design and all specifications without prior notice reserved.

SPS 17 - 50Hz

Features

- Rpm :2900
- Rotation :CCW
- Maximum sand content is 50 gr/m³
- 2 ½" inside threaded outlet connection diameter

Materials

Diffuser & Impeller:
AISI 304L - Stainless Steel

Pump Shaft / Coupling:
AISI 420 - Stainless Steel

Strainer:
AISI 304 - Stainless Steel

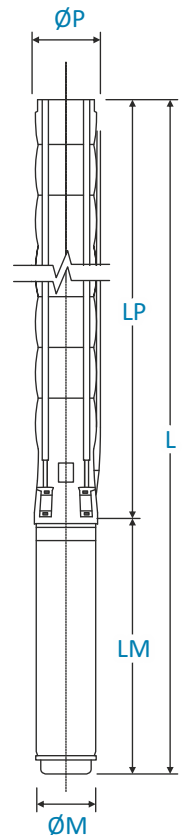
Technical Datasheets

SPS 17 Dimension and Weight Table

Product Code	Stage	Motor		Dimensions					Weight		
		kW	HP	L	LM	LP	ØM	ØP	Motor	Pump	Total
SPS 17/44	44	26,5	35	4148/3871	1217/940	2931	142/172	167	98/91	100	198/191
SPS 17/45	45	26,5	35	4209/3932	1217/940	2992	142/172	167	98/91	102	200/193
SPS 17/46	46	26,5	35	4269/3992	1217/940	3052	142/172	167	98/91	103	201/194
SPS 17/47	47	26,5	35	4330/4053	1217/940	3113	142/172	167	98/91	105	203/196
SPS 17/48	48	26,5	35	4390/4113	1217/940	3173	142/172	167	98/91	107	205/198
SPS 17/49	49	30	40	4481/4214/4290	1247/980/1056	3234	142/172/192	167	103/103/129	109	212/212/238
SPS 17/50	50	30	40	4541/4274/4350	1247/980/1056	3294	142/172/192	167	103/103/129	111	214/214/240
SPS 17/51	51	30	40	4602/4335/4411	1247/980/1056	3355	142/172/192	167	103/103/129	112	215/215/241
SPS 17/52	52	30	40	4662/4395/4471	1247/980/1056	3415	142/172/192	167	103/103/129	114	217/217/243
SPS 17/53	53	30	40	4723/4456/4532	1247/980/1056	3476	142/172/192	167	103/103/129	116	219/219/245
SPS 17/54	54	30	40	4783/4516/4592	1247/980/1056	3536	142/172/192	167	103/103/129	118	221/221/247
SPS 17/55	55	30	40	4844/4577/4653	1247/980/1056	3597	142/172/192	167	103/103/129	120	223/223/249
SPS 17/56	56	30	40	4904/4637/4713	1247/980/1056	3657	142/172/192	167	103/103/129	121	224/224/250
SPS 17/57	57	37	50	5065/4778/4834	1347/1060/1116	3718	142/172/192	167	110/113/138	123	233/236/261
SPS 17/58	58	37	50	5125/4838/4894	1347/1060/1116	3778	142/172/192	167	110/113/138	125	235/238/263
SPS 17/59	59	37	50	5186/4899/4955	1347/1060/1116	3839	142/172/192	167	110/113/138	127	237/240/265
SPS 17/60	60	37	50	5246/4959/5015	1347/1060/1116	3899	142/172/192	167	110/113/138	129	239/242/267

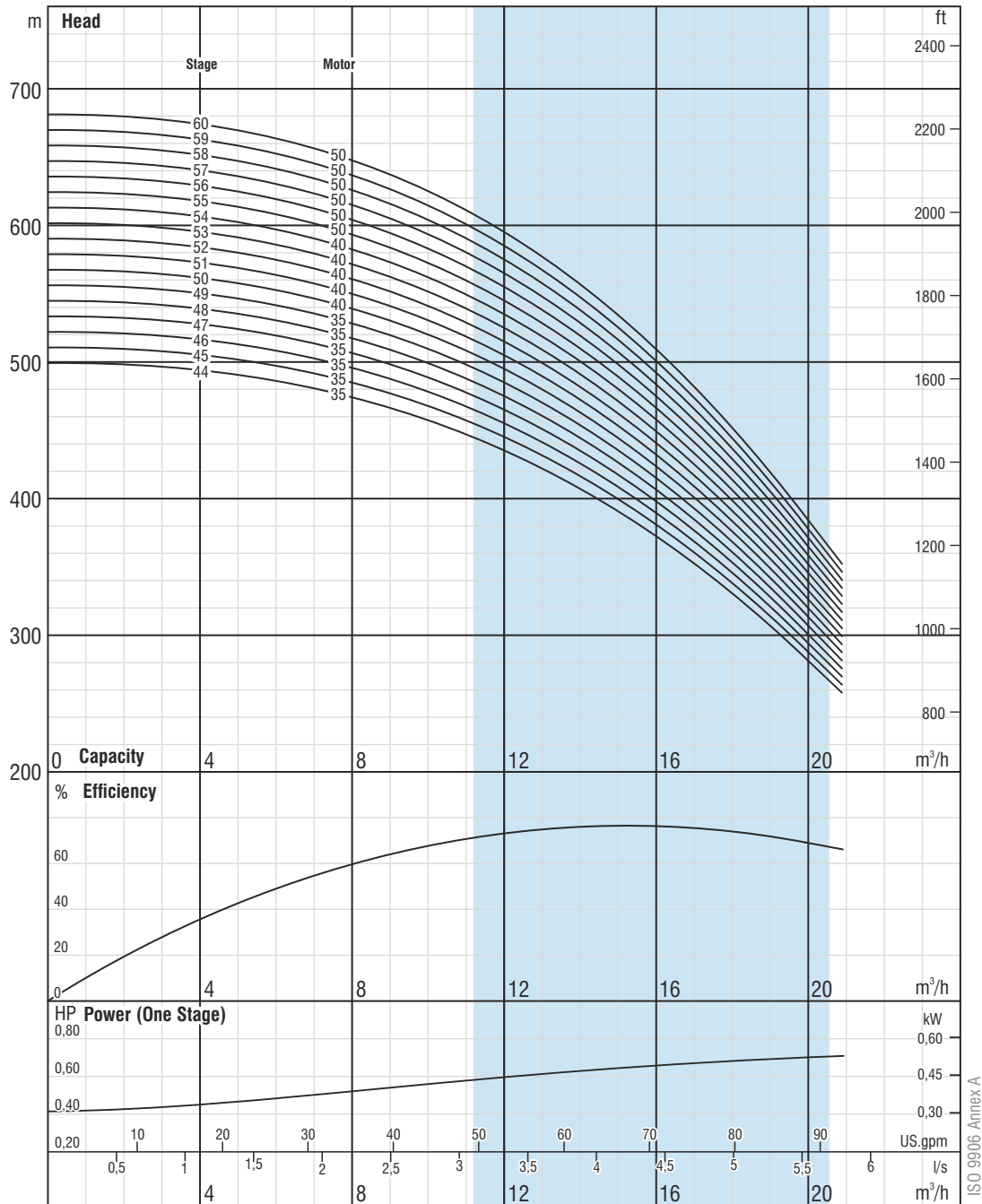
SPS 17 Performance Table

Product Code	Stage	Motor		Current	m³/h	Head (meter)										
		kW	HP			0	6	8	10	12	14	16	18	20		
SPS 17/44	44	26,5	35	56,4	l/s	0	1,7	2,2	2,8	3,3	3,9	4,4	5	5,6		
SPS 17/44	44	26,5	35	56,4		510	499	488	472	450	420	383	339	289		
SPS 17/45	45	26,5	35	56,4		521	511	499	483	460	430	391	346	296		
SPS 17/46	46	26,5	35	56,4		533	522	511	494	470	439	400	354	302		
SPS 17/47	47	26,5	35	56,4		544	533	522	504	480	449	409	362	309		
SPS 17/48	48	26,5	35	56,4		556	545	533	515	491	458	418	370	315		
SPS 17/49	49	30	40	61,7		567	556	544	526	501	468	426	377	322		
SPS 17/50	50	30	40	61,7		579	567	555	537	511	477	435	385	328		
SPS 17/51	51	30	40	61,7		591	579	566	547	521	487	444	393	335		
SPS 17/52	52	30	40	61,7		602	590	577	558	532	496	452	400	342		
SPS 17/53	53	30	40	61,7		614	601	588	569	542	506	461	408	348		
SPS 17/54	54	30	40	61,7		625	613	599	580	552	515	470	416	355		
SPS 17/55	55	30	40	61,7		637	624	610	590	562	525	478	423	361		
SPS 17/56	56	30	40	61,7		648	635	622	601	572	535	487	431	368		
SPS 17/57	57	37	50	74,3		660	647	633	612	583	544	496	439	374		
SPS 17/58	58	37	50	74,3		672	658	644	623	593	554	505	447	381		
SPS 17/59	59	37	50	74,3		683	669	655	633	603	563	513	454	388		
SPS 17/60	60	37	50	74,3		695	681	666	644	613	573	522	462	394		



Well Stainless Steel Submersible Pumps

SPS 17 Performance Curve (44 to 60 stage)



The right to change design and all specifications without prior notice reserved.

SPS 17 - 50Hz

Features

- Rpm :2900
- Rotation :CCW
- Maximum sand content is 50 gr/m³
- 2 ½" inside threaded outlet connection diameter

Materials

Diffuser & Impeller:
AISI 304L - Stainless Steel

Pump Shaft / Coupling:
AISI 420 - Stainless Steel

Strainer:
AISI 304 - Stainless Steel

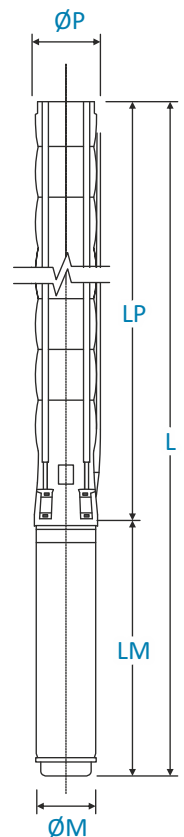
Technical Datasheets

SPS 30 Dimension and Weight Table

Product Code	Stage	Motor		Dimensions					Weight		
		kW	HP	L	LM	LP	ØM	ØP	Motor	Pump	Total
SPS 30/04	4	4	5,5	1298	649	649	142	132	40	13	53
SPS 30/05	5	5,5	7,5	1422	678	744	142	132	43.5	15	58.5
SPS 30/06	6	5,5	7,5	1517	678	839	142	132	43.5	17	60.5
SPS 30/07	7	7,5	10	1692	758	934	142	132	50	19	69
SPS 30/08	8	7,5	10	1787	758	1029	142	132	50	21	71
SPS 30/09	9	9,3	12,5	1924	800	1124	142	132	55	23	78
SPS 30/10	10	9,3	12,5	2019	800	1219	142	132	55	25	80
SPS 30/11	11	9,3	12,5	2114	800	1314	142	132	55	27	82
SPS 30/12	12	11	15	2260	851	1409	142	132	60	29	89
SPS 30/13	13	11	15	2355	851	1504	142	132	60	31	91
SPS 30/14	14	13	17,5	2510	911	1599	142	132	65	33	98
SPS 30/15	15	13	17,5	2605	911	1694	142	132	65	36	101
SPS 30/16	16	15	20	2762	973	1789	142	132	72	38	110
SPS 30/17	17	15	20	2857	973	1884	142	132	72	40	112
SPS 30/18	18	18,5	25	2985	1006	1979	142	132	76	42	118
SPS 30/19	19	18,5	25	3080	1006	2074	142	132	76	44	120
SPS 30/20	20	18,5	25	3175	1006	2169	142	132	76	46	122

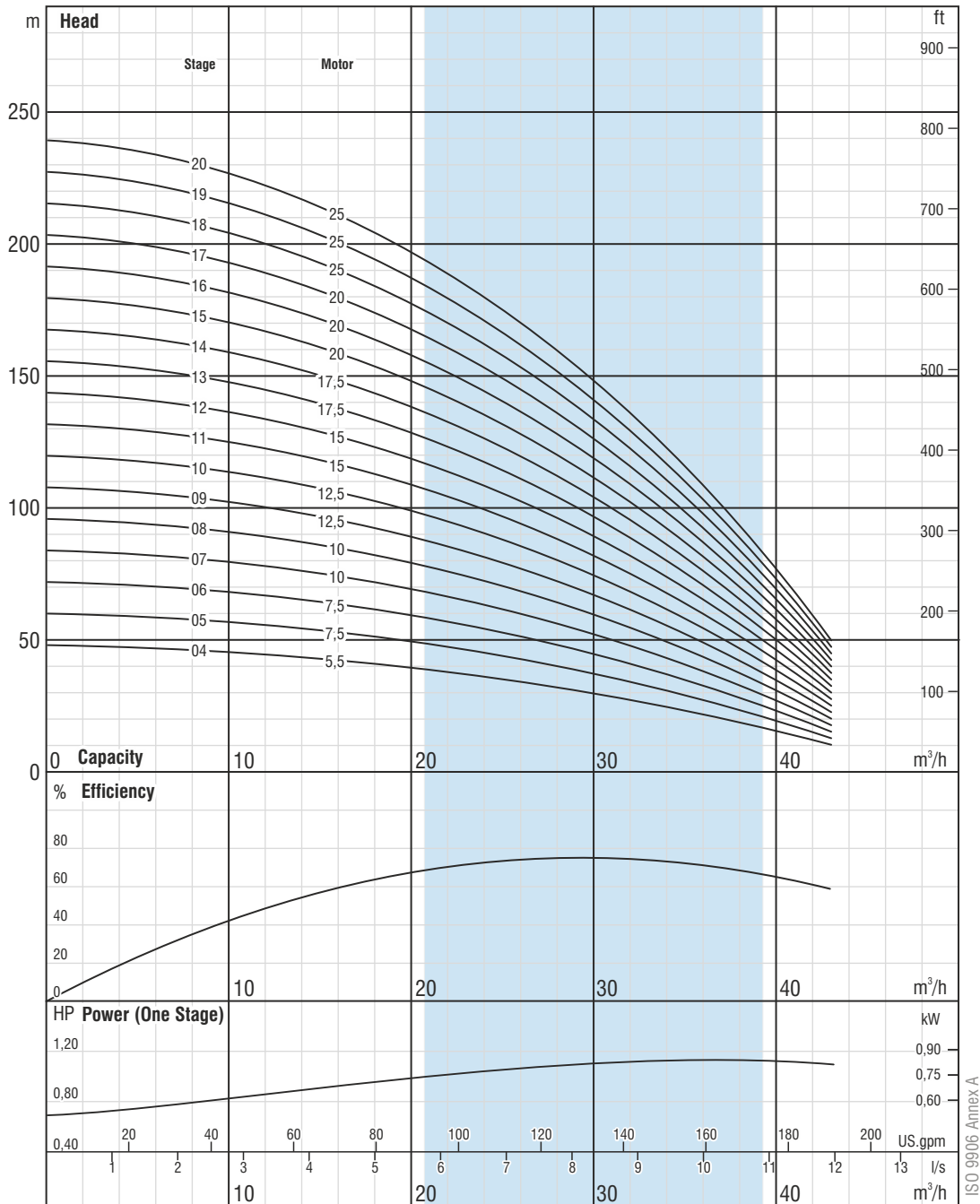
SPS 30 Performance Table

Product Code	Stage	Motor		Current	m³/h	Head (meter)					
		kW	HP			0	7,2	14,4	21,6	28,8	36
SPS 30/04	4	4	5,5	10,2	48	46	43	38	31	22	10
SPS 30/05	5	5,5	7,5	13,3	60	58	54	47	39	27	12
SPS 30/06	6	5,5	7,5	13,3	72	69	64	57	46	33	15
SPS 30/07	7	7,5	10	17,2	84	81	75	66	54	38	17
SPS 30/08	8	7,5	10	17,2	96	92	86	76	62	44	20
SPS 30/09	9	9,3	12,5	20,8	108	104	97	85	70	49	22
SPS 30/10	10	9,3	12,5	20,8	119	116	107	95	77	54	25
SPS 30/11	11	9,3	12,5	20,8	131	127	118	104	85	60	27
SPS 30/12	12	11	15	23,7	143	139	129	113	93	65	30
SPS 30/13	13	11	15	23,7	155	150	139	123	100	71	32
SPS 30/14	14	13	17,5	28,7	167	162	150	132	108	76	35
SPS 30/15	15	13	17,5	28,7	179	173	161	142	116	82	37
SPS 30/16	16	15	20	33,1	191	185	172	151	124	87	40
SPS 30/17	17	15	20	33,1	203	196	182	161	131	93	42
SPS 30/18	18	18,5	25	41,8	215	208	193	170	139	98	45
SPS 30/19	19	18,5	25	41,8	227	220	204	180	147	103	47
SPS 30/20	20	18,5	25	41,8	239	231	214	189	155	109	50



Well Stainless Steel Submersible Pumps

SPS 30 Performance Curve (04 to 20 stage)



The right to change design and all specifications without prior notice reserved.

SPS 30 - 50Hz

Features

- Rpm :2900
- Rotation :CCW
- Maximum sand content is 50 gr/m³
- 3" inside threaded outlet connection diameter

Materials

Diffuser & Impeller:
AISI 304L - Stainless Steel

Pump Shaft / Coupling:
AISI 420 - Stainless Steel

Strainer:
AISI 304 - Stainless Steel

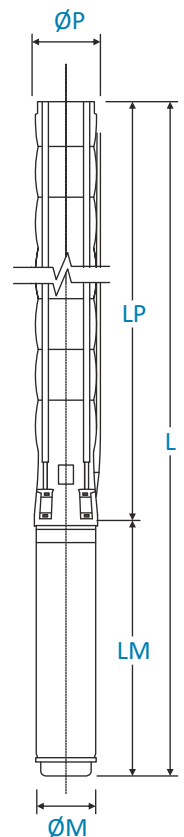
Technical Datasheets

SPS 30 Dimension and Weight Table

Product Code	Stage	Motor		Dimensions					Weight		
		kW	HP	L	LM	LP	ØM	ØP	Motor	Pump	Total
SPS 30/21	21	18,5	25	3270	1006	2264	142	132	76	48	124
SPS 30/22	22	22	30	3465/3249	1106/890	2359	142/172	132	87/86	50	137/136
SPS 30/23	23	22	30	3560/3344	1106/890	2454	142/172	132	87/86	52	139/138
SPS 30/24	24	22	30	3655/3439	1106/890	2549	142/172	132	87/86	54	141/140
SPS 30/25	25	22	30	3750/3534	1106/890	2644	142/172	132	87/86	56	143/142
SPS 30/26	26	22	30	3845/3629	1106/890	2739	142/172	132	87/86	58	145/144
SPS 30/27	27	26,5	35	4051/3774	1217/940	2834	142/172	132	98/91	60	158/151
SPS 30/28	28	26,5	35	4146/3869	1217/940	2929	142/172	132	98/91	63	161/154
SPS 30/29	29	26,5	35	4241/3964	1217/940	3024	142/172	132	98/91	65	163/156
SPS 30/30	30	26,5	35	4336/4059	1217/940	3119	142/172	132	98/91	67	165/158
SPS 30/31	31	30	40	4461/4194/4270	1247/980/1056	3214	142/172/192	132	103/103/129	69	172/172/198
SPS 30/32	32	30	40	4556/4289/4365	1247/980/1056	3309	142/172/192	132	103/103/129	71	174/174/200
SPS 30/33	33	30	40	4651/4384/4460	1247/980/1056	3404	142/172/192	132	103/103/129	73	176/176/202
SPS 30/34	34	30	40	4746/4479/4555	1247/980/1056	3499	142/172/192	132	103/103/129	75	178/178/204
SPS 30/35	35	30	40	4841/4574/4650	1247/980/1056	3594	142/172/192	132	103/103/129	77	180/180/206
SPS 30/36	36	30	40	4936/4669/4745	1247/980/1056	3689	142/172/192	132	103/103/129	79	182/182/208
SPS 30/37	37	30	40	5031/4764/4840	1247/980/1056	3784	142/172/192	132	103/103/129	81	184/184/210

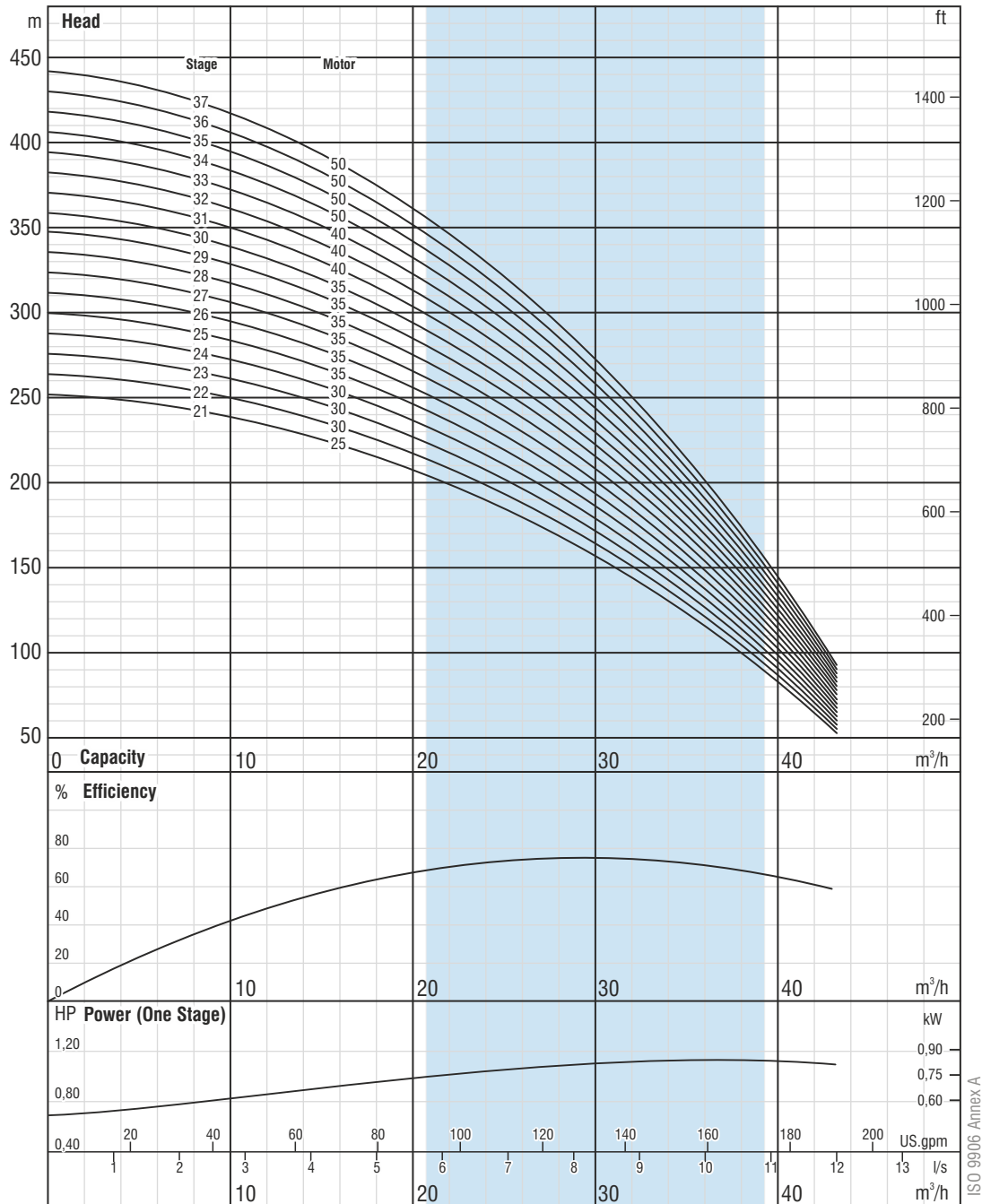
SPS 30 Performance Table

Product Code	Stage	Motor		Current	m³/h	Head (meter)					
		kW	HP			0	7,2	14,4	21,6	28,8	36
SPS 30/21	21	18,5	25	41,8	251	243	225	199	162	114	52
SPS 30/22	22	22	30	48,5	263	254	236	208	170	120	54
SPS 30/23	23	22	30	48,5	275	266	247	218	178	125	57
SPS 30/24	24	22	30	48,5	287	277	257	227	185	131	59
SPS 30/25	25	26,5	35	48,5	299	289	268	236	193	136	62
SPS 30/26	26	26,5	35	48,5	311	301	279	246	201	142	64
SPS 30/27	27	26,5	35	56,4	323	312	290	255	209	147	67
SPS 30/28	28	26,5	35	56,4	334	324	300	265	216	152	69
SPS 30/29	29	26,5	35	56,4	346	335	311	274	224	158	72
SPS 30/30	30	26,5	35	56,4	358	347	322	284	232	163	74
SPS 30/31	31	30	40	61,7	370	358	332	293	240	169	77
SPS 30/32	32	30	40	61,7	382	370	343	303	247	174	79
SPS 30/33	33	30	40	61,7	394	381	354	312	255	180	82
SPS 30/34	34	37	50	61,7	406	393	365	322	263	185	84
SPS 30/35	35	37	50	61,7	418	405	375	331	270	191	87
SPS 30/36	36	37	50	61,7	430	416	386	340	278	196	89
SPS 30/37	37	37	50	61,7	442	428	397	350	286	201	92



Well Stainless Steel Submersible Pumps

SPS 30 Performance Curve (21 to 37 stage)



The right to change design and all specifications without prior notice reserved.

SPS 30 - 50Hz

Features

- Rpm :2900
- Rotation :CCW
- Maximum sand content is 50 gr/m³
- 3" inside threaded outlet connection diameter

Materials

Diffuser & Impeller:
AISI 304L - Stainless Steel

Pump Shaft / Coupling:
AISI 420 - Stainless Steel

Strainer:
AISI 304 - Stainless Steel

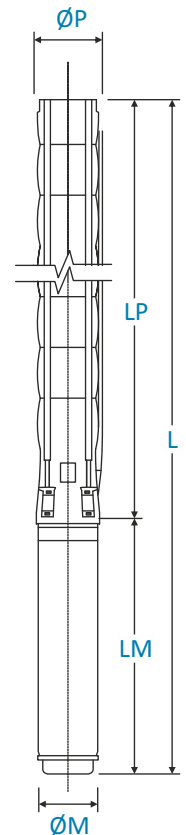
Technical Datasheets

SPS 30 Dimension and Weight Table

Product Code	Stage	Motor		Dimensions					Weight		
		kW	HP	L	LM	LP	ØM	ØP	Motor	Pump	Total
SPS 30/38	38	30	40	5126/4859/4935	1247/980/1056	3879	142/172/192	132	103/103/129	83	186/186/212
SPS 30/39	39	37	50	5321/5034/5090	1347/1060/1116	3974	142/172/192	167	110/113/138	124	234/237/262
SPS 30/40	40	37	50	5416/5129/5185	1347/1060/1116	4069	142/172/192	167	110/113/138	126	236/239/264
SPS 30/41	41	37	50	5511/5224/5280	1347/1060/1116	4164	142/172/192	167	110/113/138	129	239/242/267
SPS 30/42	42	37	50	5606/5319/5375	1347/1060/1116	4259	142/172/192	167	110/113/138	132	242/245/270
SPS 30/43	43	45	60	5493/5555	1139/1201	4354	172/192	167	127/152	134	261/286
SPS 30/44	44	45	60	5588/5650	1139/1201	4449	172/192	167	127/152	137	264/289
SPS 30/45	45	45	60	5683/5745	1139/1201	4544	172/192	167	127/152	139	266/291
SPS 30/46	46	45	60	5778/5840	1139/1201	4639	172/192	167	127/152	142	269/294
SPS 30/47	47	45	60	5873/5935	1139/1201	4734	172/192	167	127/152	145	272/297
SPS 30/48	48	45	60	5968/6030	1139/1201	4829	172/192	167	127/152	147	274/299
SPS 30/49	49	45	60	6063/6125	1139/1201	4924	172/192	167	127/152	150	277/302
SPS 30/50	50	45	60	6158/6220	1139/1201	5019	172/192	167	127/152	152	279/304
SPS 30/51	51	45	60	6253/6315	1139/1201	5114	172/192	167	127/152	155	282/307
SPS 30/52	52	52	70	6427/6495	1218/1286	5209	172/192	167	138/170	158	296/328
SPS 30/53	53	52	70	6522/6590	1218/1286	5304	172/192	167	138/170	160	298/330
SPS 30/54	54	52	70	6617/6685	1218/1286	5399	172/192	167	138/170	163	301/333

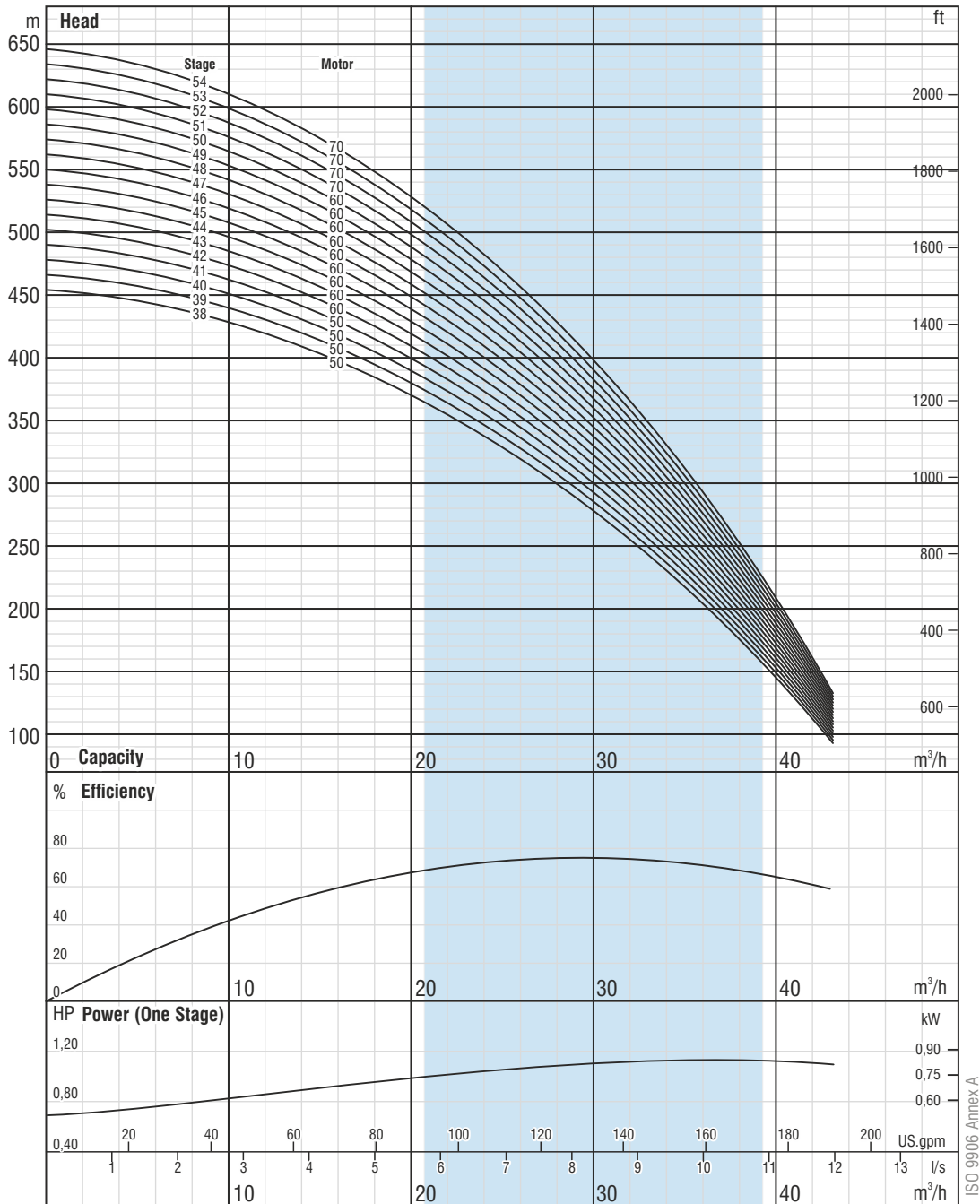
SPS 30 Performance Table

Product Code	Stage	Motor		Current	m³/h	Head (meter)					
		kW	HP			0	7,2	14,4	21,6	28,8	36
SPS 30/38	38	30	40	61,7	454	439	407	359	294	207	94
SPS 30/39	39	37	50	74,3	466	451	418	369	301	212	97
SPS 30/40	40	37	50	74,3	478	462	429	378	309	218	99
SPS 30/41	41	37	50	74,3	490	474	440	388	317	223	102
SPS 30/42	42	37	50	74,3	502	485	450	397	324	229	104
SPS 30/43	43	45	60	90,4	514	497	461	407	332	234	107
SPS 30/44	44	45	60	90,4	526	509	472	416	340	240	109
SPS 30/45	45	45	60	90,4	538	520	483	426	348	245	111
SPS 30/46	46	45	60	90,4	550	532	493	435	355	250	114
SPS 30/47	47	45	60	90,4	561	543	504	444	363	256	116
SPS 30/48	48	45	60	90,4	573	555	515	454	371	261	119
SPS 30/49	49	45	60	90,4	585	566	525	463	379	267	121
SPS 30/50	50	45	60	90,4	597	578	536	473	386	272	124
SPS 30/51	51	45	60	90,4	609	589	547	482	394	278	126
SPS 30/52	52	52	70	103,3	621	601	558	492	402	283	129
SPS 30/53	53	52	70	103,3	633	613	568	501	409	289	131
SPS 30/54	54	52	70	103,3	645	624	579	511	417	294	134



Well Stainless Steel Submersible Pumps

SPS 30 Performance Curve (38 to 54 stage)



The right to change design and all specifications without prior notice reserved.

SPS 30 - 50Hz

Features

- Rpm :2900
- Rotation :CCW
- Maximum sand content is 50 gr/m³
- 3" inside threaded outlet connection diameter

Materials

Diffuser & Impeller:
AISI 304L - Stainless Steel

Pump Shaft / Coupling:
AISI 420 - Stainless Steel

Strainer:
AISI 304 - Stainless Steel

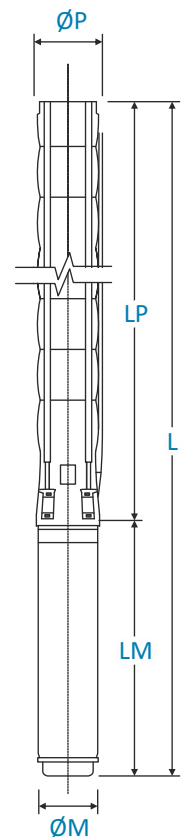
Technical Datasheets

SPS 36 Dimension and Weight Table

Product Code	Stage	Motor		Dimensions					Weight		
		kW	HP	L	LM	LP	ØM	ØP	Motor	Pump	Total
SPS 36/01	1	1,5	2	823	441	382	95	144	10.4	7	17.4
SPS 36/02	2	3	4	1024	530	494	95	144	16.2	10	26.2
SPS 36/03	3	5,5	7,5	1261/1255	655/649	606	95/142	144	22.5/40	12	34.5/52
SPS 36/04	4	7,5	10	1513/1396	795/678	718	95/142	144	28.8/43.5	15	43.8/58.5
SPS 36/05	5	7,5	10	1625/1508	795/678	830	95/142	144	28.8/43.5	18	46.8/61.5
SPS 36/06	6	9,3	12,5	1700	758	942	142	144	50	20	70
SPS 36/07	7	11	15	1854	800	1054	142	144	55	23	78
SPS 36/08	8	13	17,5	2017	851	1166	142	144	60	26	86
SPS 36/09	9	13	17,5	2129	851	1278	142	144	60	28	88
SPS 36/10	10	15	20	2301	911	1390	142	144	65	31	96
SPS 36/11	11	18,5	25	2475	973	1502	142	144	72	34	106
SPS 36/12	12	18,5	25	2587	973	1614	142	144	72	36	108
SPS 36/13	13	18,5	25	2699	973	1726	142	144	72	39	111
SPS 36/14	14	22	30	2844/2678	1006/840	1838	142/172	144	76/81	42	118/123
SPS 36/15	15	22	30	2956/2790	1006/840	1950	142/172	144	76/81	44	120/125
SPS 36/16	16	26,5	35	3168/2952	1106/890	2062	142/172	144	87/86	47	134/133
SPS 36/17	17	26,5	35	3280/3064	1106/890	2174	142/172	144	87/86	49	136/135

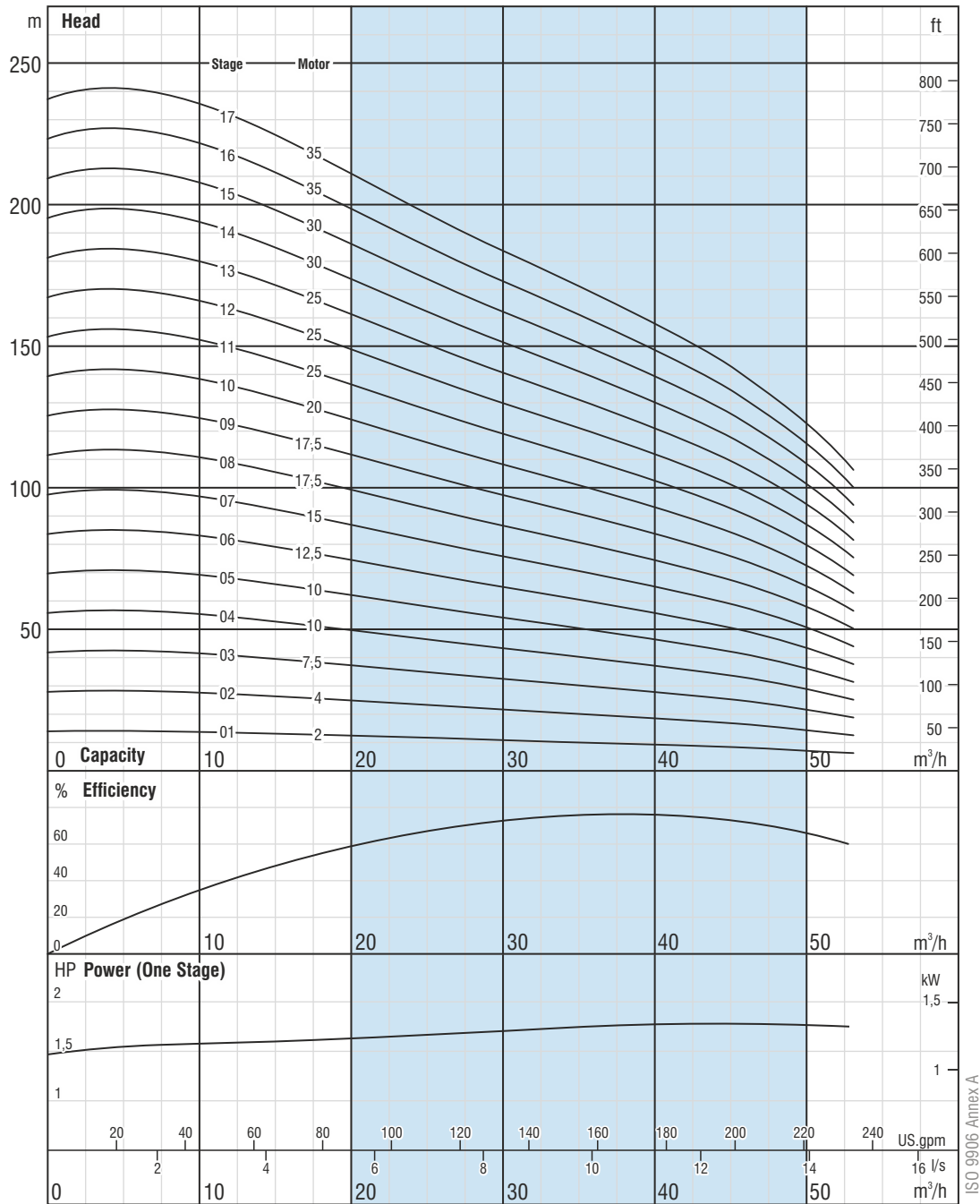
SPS 36 Performance Table

Product Code	Stage	Motor		Current	m³/h	Head (meter)										
		kW	HP			0	8	20	30	35	38	41	50			
SPS 36/01	1	1,5	2	3.8		0	2,2	5,6	8,3	9,7	10,6	11,4	13,9			
SPS 36/02	2	3	4	7.2	454	439	407	359	294	207	94	6				
SPS 36/03	3	5,5	7,5	13.3	466	451	418	369	301	212	97	14				
SPS 36/04	4	7,5	10	17.2	478	462	429	378	309	218	99	22				
SPS 36/05	5	7,5	10	17.2	490	474	440	388	317	223	102	29				
SPS 36/06	6	9,3	12,5	20.8	502	485	450	397	324	229	104	36				
SPS 36/07	7	11	15	23.7	514	497	461	407	332	234	107	44				
SPS 36/08	8	13	17,5	28.7	526	509	472	416	340	240	109	51				
SPS 36/09	9	13	17,5	28.7	538	520	483	426	348	245	111	58				
SPS 36/10	10	15	20	33.1	550	532	493	435	355	250	114	65				
SPS 36/11	11	18,5	25	41.8	561	543	504	444	363	256	116	73				
SPS 36/12	12	18,5	25	41.8	573	555	515	454	371	261	119	80				
SPS 36/13	13	18,5	25	41.8	585	566	525	463	379	267	121	87				
SPS 36/14	14	22	30	48.5	597	578	536	473	386	272	124	94				
SPS 36/15	15	22	30	48.5	609	589	547	482	394	278	126	102				
SPS 36/16	16	26,5	35	56.4	621	601	558	492	402	283	129	109				
SPS 36/17	17	26,5	35	56.4	633	613	568	501	409	289	131	116				
					645	624	579	511	417	294	134	123				



Well Stainless Steel Submersible Pumps

SPS 36 Performance Curve (01 to 17 stage)



The right to change design and all specifications without prior notice reserved.

SPS 36 - 50Hz

Features

- Rpm :2900
- Rotation :CCW
- Maximum sand content is 50 gr/m³
- 4" inside threaded outlet connection diameter

Materials

Diffuser & Impeller:
AISI 304L - Stainless Steel

Pump Shaft / Coupling:
AISI 420 - Stainless Steel

Strainer:
AISI 304 - Stainless Steel

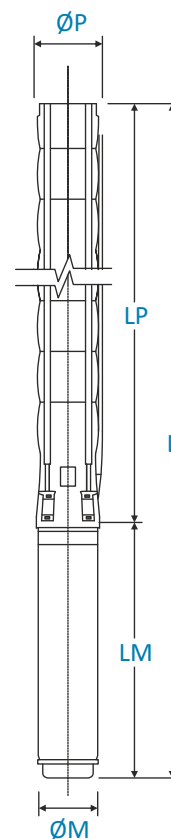
Technical Datasheets

SPS 36 Dimension and Weight Table

Product Code	Stage	Motor		Dimensions					Weight		
		kW	HP	L	LM	LP	ØM	ØP	Motor	Pump	Total
SPS 36/18	18	26,5	35	3392/3176	1106/890	2286	142/172	144	87/86	52	139/138
SPS 36/19	19	30	40	3615/3338/3394	1217/940/996	2398	142/172/192	144	98/91/120	55	153/146/175
SPS 36/20	20	30	40	3727/3450/3506	1217/940/996	2510	142/172/192	144	98/91/120	57	155/148/177
SPS 36/21	21	30	40	3839/3562/3618	1217/940/996	2622	142/172/192	144	98/91/120	60	158/151/180
SPS 36/22	22	37	50	3981/3714/3790	1247/980/1056	2734	142/172/192	144	103/103/129	63	166/166/192
SPS 36/23	23	37	50	4093/3826/3902	1247/980/1056	2846	142/172/192	144	103/103/129	65	168/168/194
SPS 36/24	24	37	50	4205/3938/4014	1247/980/1056	2958	142/172/192	144	103/103/129	68	171/171/197
SPS 36/25	25	37	50	4317/4050/4126	1247/980/1056	3070	142/172/192	144	103/103/129	71	174/174/200
SPS 36/26	26	45	60	4529/4242/4298	1347/1060/1116	3182	142/172/192	144	110/113/138	73	183/186/211
SPS 36/27	27	45	60	4641/4354/4410	1347/1060/1116	3294	142/172/192	144	110/113/138	76	186/189/214
SPS 36/28	28	45	60	4753/4466/4522	1347/1060/1116	3406	142/172/192	144	110/113/138	79	189/192/217
SPS 36/29	29	45	60	4865/4578/4634	1347/1060/1116	3518	142/172/192	144	110/113/138	81	191/194/219
SPS 36/30	30	45	60	4977/4690/4746	1347/1060/1116	3630	142/172/192	144	110/113/138	84	194/197/222
SPS 36/31	31	45	60	5089/4802/4858	1347/1060/1116	3742	142/172/192	144	110/113/138	86	196/199/224
SPS 36/32	32	52	70	4993/5055	1139/1201	3854	172/192	144	127/152	89	216/241
SPS 36/33	33	52	70	5105/5167	1139/1201	3966	172/192	144	127/152	92	219/244

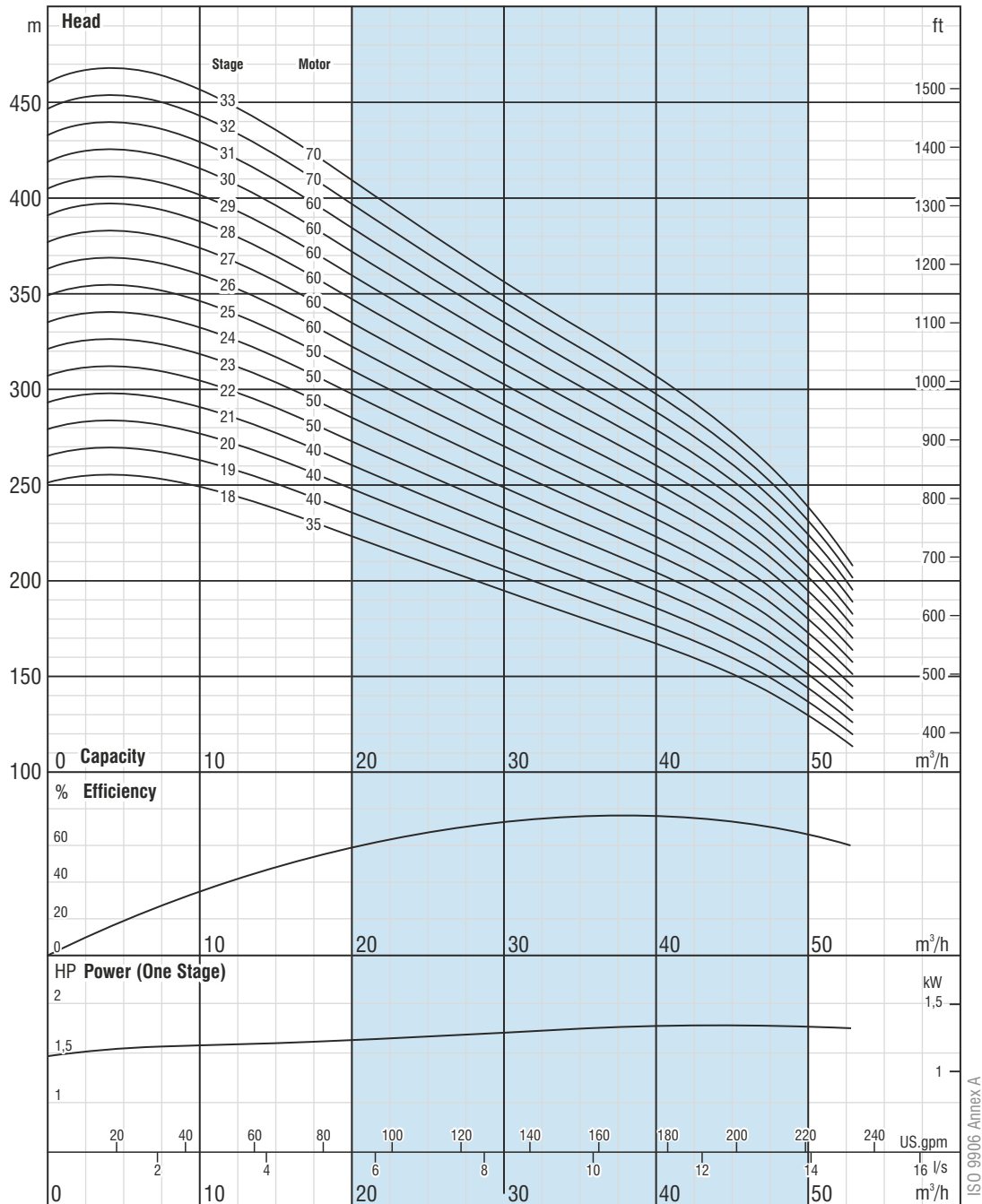
SPS 36 Performance Table

Product Code	Stage	Motor		Current	m³/h	Head (meter)															
		kW	HP			0	8	20	30	35	38	41	50								
SPS 36/18	18	26,5	35	56,4	0	0	2,2	5,6	8,3	9,7	10,6	11,4	13,9	251	252	223	194	181	173	165	131
SPS 36/19	19	30	40	61,7	0	2,2	5,6	8,3	9,7	10,6	11,4	13,9	265	266	236	205	191	183	174	138	
SPS 36/20	20	30	40	61,7	0	2,2	5,6	8,3	9,7	10,6	11,4	13,9	279	280	248	216	201	192	183	145	
SPS 36/21	21	30	40	61,7	0	2,2	5,6	8,3	9,7	10,6	11,4	13,9	293	294	261	227	211	202	192	152	
SPS 36/22	22	37	50	74,3	0	2,2	5,6	8,3	9,7	10,6	11,4	13,9	307	308	273	238	221	211	201	160	
SPS 36/23	23	37	50	74,3	0	2,2	5,6	8,3	9,7	10,6	11,4	13,9	321	322	285	248	231	221	210	167	
SPS 36/24	24	37	50	74,3	0	2,2	5,6	8,3	9,7	10,6	11,4	13,9	335	337	298	259	241	231	219	174	
SPS 36/25	25	37	50	74,3	0	2,2	5,6	8,3	9,7	10,6	11,4	13,9	349	351	310	270	251	240	229	181	
SPS 36/26	26	45	60	90,4	0	2,2	5,6	8,3	9,7	10,6	11,4	13,9	363	365	323	281	262	250	238	189	
SPS 36/27	27	45	60	90,4	0	2,2	5,6	8,3	9,7	10,6	11,4	13,9	377	379	335	292	272	260	247	196	
SPS 36/28	28	45	60	90,4	0	2,2	5,6	8,3	9,7	10,6	11,4	13,9	391	393	347	303	282	269	256	203	
SPS 36/29	29	45	60	90,4	0	2,2	5,6	8,3	9,7	10,6	11,4	13,9	405	407	360	313	292	279	265	210	
SPS 36/30	30	45	60	90,4	0	2,2	5,6	8,3	9,7	10,6	11,4	13,9	419	421	372	324	302	288	274	218	
SPS 36/31	31	45	60	90,4	0	2,2	5,6	8,3	9,7	10,6	11,4	13,9	433	435	385	335	312	298	283	225	
SPS 36/32	32	52	70	103,3	0	2,2	5,6	8,3	9,7	10,6	11,4	13,9	447	449	397	346	322	308	293	232	
SPS 36/33	33	52	70	103,3	0	2,2	5,6	8,3	9,7	10,6	11,4	13,9	461	463	410	357	332	317	302	239	



Well Stainless Steel Submersible Pumps

SPS 36 Performance Curve (18 to 36 stage)



The right to change design and all specifications without prior notice reserved.

SPS 36 - 50Hz

Features

- Rpm :2900
- Rotation :CCW
- Maximum sand content is 50 gr/m³
- 4" inside threaded outlet connection diameter

Materials

Diffuser & Impeller:
AISI 304L - Stainless Steel

Pump Shaft / Coupling:
AISI 420 - Stainless Steel

Strainer:
AISI 304 - Stainless Steel

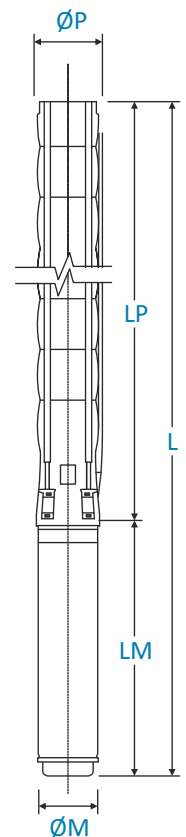
Technical Datasheets

SPS 646 Dimension and Weight Table

Product Code	Stage	Motor		Dimensions					Weight		
		kW	HP	L	LM	LP	ØM	ØP	Motor	Pump	Total
SPS 646/03	3	5,5	7,5	1268	678	590	142	144	43,5	12	56
SPS 646/04	4	7,5	10	1477	758	719	142	144	50	14	64
SPS 646/05	5	9,3	12,5	1632	800	832	142	144	55	16	71
SPS 646/06	6	11	15	1796	851	945	142	144	60	19	79
SPS 646/07	7	15	20	2031	973	1058	142	144	72	21	93
SPS 646/08	8	15	20	2144	973	1171	142	144	72	23	95
SPS 646/09	9	15	20	2257	973	1284	142	144	72	25	97
SPS 646/10	10	18,5	25	2392	1006	1386	142	144	76	27	103
SPS 646/11	11	18,5	25	2516	1006	1510	142	144	76	30	106
SPS 646/12	12	22	30	2718/2502	1106/890	1612	142/172	144	87/86	32	119/118
SPS 646/13	13	22	30	2820/2604	1106/890	1714	142/172	144	87/86	35	122/121
SPS 646/14	14	26,5	35	3066/2789	1217/940	1849	142/172	144	98/91	37	135/128
SPS 646/15	15	26,5	35	3168/2891	1217/940	1951	142/172	144	98/91	39	137/130
SPS 646/16	16	26,5	35	3292/3015	1217/940	2075	142/172	144	98/91	41	139/132
SPS 646/17	17	30	40	3424/3157/3233	1247/980/1056	2177	142/172/192	144	103/103/129	43	146/146/172
SPS 646/18	18	30	40	3548/3281/3357	1247/980/1056	2301	142/172/192	144	103/103/129	46	149/149/175
SPS 646/19	19	37	50	3750/3463/3519	1347/1060/1116	2403	142/172/192	144	110/113/138	48	158/161/186

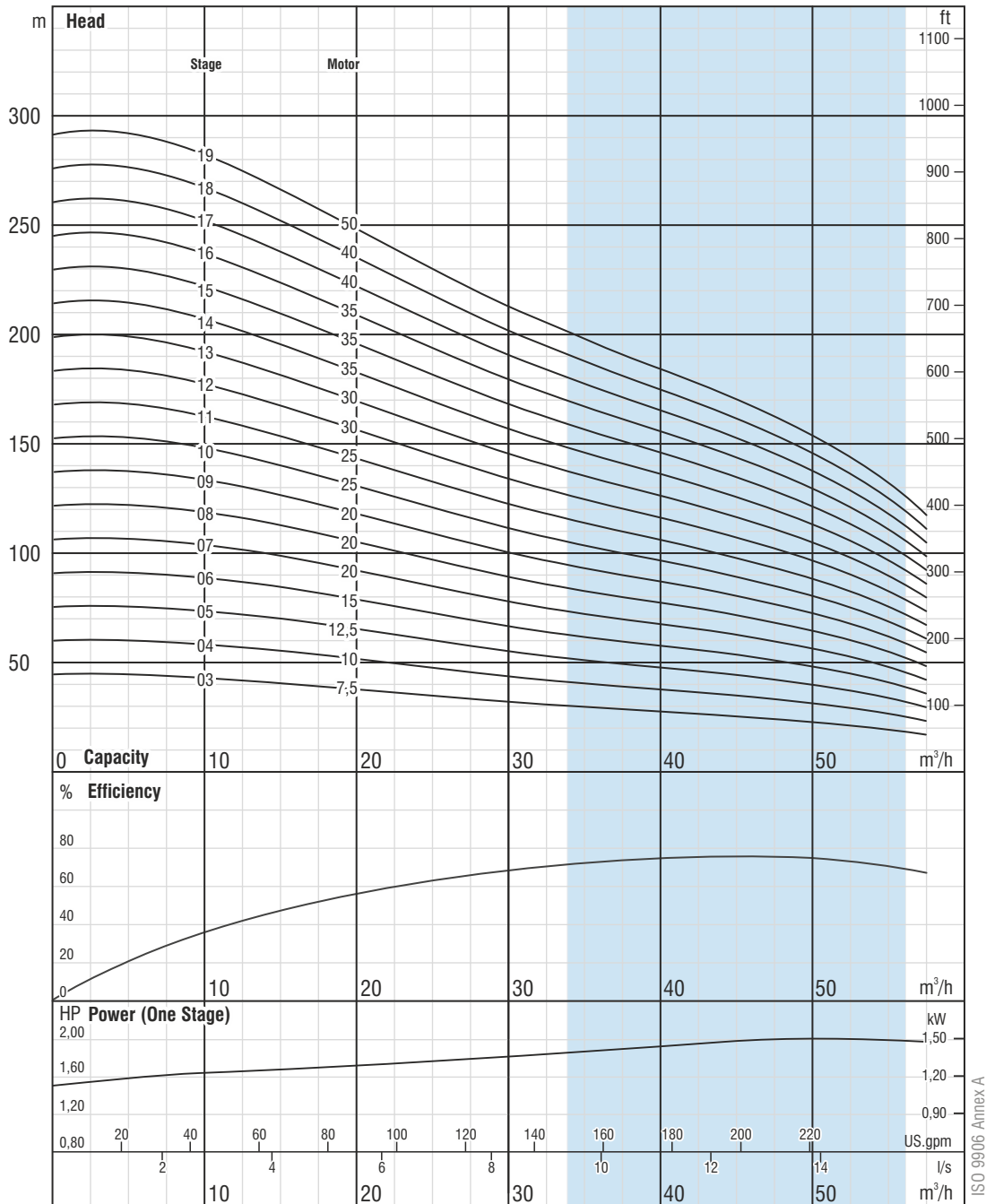
SPS 646 Performance Table

Product Code	Stage	Motor		Current	m³/h	Head (meter)							
		kW	HP			0	22	29	36	43	47	50	58
SPS 646/03	3	5,5	7,5	13,6	0	46	38	34	31	28	26	24	19
SPS 646/04	4	7,5	10	17,2	6	61	51	46	41	37	35	32	25
SPS 646/05	5	9,3	12,5	20,8	8	77	64	57	51	46	44	40	31
SPS 646/06	6	11	15	23,7	10	92	76	69	62	56	52	48	37
SPS 646/07	7	15	20	33,1	12	107	89	80	72	65	61	57	44
SPS 646/08	8	15	20	33,1	13	122	102	91	82	74	70	65	50
SPS 646/09	9	15	20	33,1	14	138	115	103	93	83	78	73	56
SPS 646/10	10	18,5	25	41,8	15	153	127	114	103	93	87	81	62
SPS 646/11	11	18,5	25	41,8	16	168	140	126	113	102	96	89	68
SPS 646/12	12	22	30	48,5	17	184	153	137	123	111	105	97	75
SPS 646/13	13	22	30	48,5	18	199	166	148	134	120	113	105	81
SPS 646/14	14	26,5	35	56,4	19	214	178	160	144	130	122	113	87
SPS 646/15	15	26,5	35	56,4	20	230	191	171	154	139	131	121	93
SPS 646/16	16	26,5	35	56,4	21	245	204	183	165	148	139	129	100
SPS 646/17	17	30	40	64,6	22	260	217	194	175	157	148	137	106
SPS 646/18	18	30	40	64,6	23	275	229	206	185	167	157	145	112
SPS 646/19	19	37	50	81,6	24	291	242	217	195	176	166	153	118



Well Stainless Steel Submersible Pumps

SPS 646 Performance Curve (03 to 19 stage)



The right to change design and all specifications without prior notice reserved.

SPS 646 - 50Hz

Features

- Rpm :2900
- Rotation :CCW
- Maximum sand content is 50 gr/m³
- 4" inside threaded outlet connection diameter

Materials

Diffuser & Impeller:
AISI 304L - Stainless Steel

Pump Shaft / Coupling:
AISI 420 - Stainless Steel

Strainer:
AISI 304 - Stainless Steel

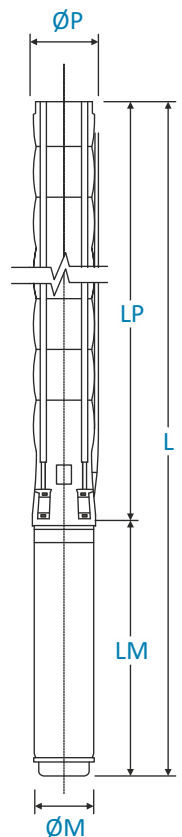
Technical Datasheets

SPS 646 Dimension and Weight Table

Product Code	Stage	Motor		Dimensions					Weight		
		kW	HP	L	LM	LP	ØM	ØP	Motor	Pump	Total
SPS 646/20	20	37	50	3852/3565/3621	1347/1060/1116	2505	142/172/192	144	110/113/138	51	161/164/189
SPS 646/21	21	37	50	3954/3667/3723	1347/1060/1116	2607	142/172/192	144	110/113/138	53	163/166/191
SPS 646/22	22	37	50	4056/3769/3825	1347/1060/1116	2709	142/172/192	144	110/113/138	55	165/168/193
SPS 646/23	23	45	60	4005/4067	1139/1201	2866	172/192	144	127/152	58	185/210
SPS 646/24	24	45	60	4107/4169	1139/1201	2968	172/192	144	127/152	60	187/212
SPS 646/25	25	45	60	4209/4271	1139/1201	3070	172/192	144	127/152	63	190/215
SPS 646/26	26	45	60	4542/4604	1139/1201	3403	172/192	144	127/152	65	192/217
SPS 646/27	27	45	60	4644/4706	1139/1201	3505	172/192	144	127/152	67	194/219
SPS 646/28	28	52	70	4847/4915	1218/1286	3629	172/192	144	138/170	69	207/239
SPS 646/29	29	52	70	4949/5017	1218/1286	3731	172/192	144	138/170	71	209/241
SPS 646/30	30	52	70	5073/5141	1218/1286	3855	172/192	144	138/170	74	212/244
SPS 646/31	31	52	70	5175/5243	1218/1286	3957	172/192	144	138/170	76	214/246
SPS 646/32	32	55	75	5309/5345	1250/1286	4059	172/192	144	138/170	79	217/249
SPS 646/33	33	55	75	5444/5480	1250/1286	4194	172/192	144	138/170	81	219/251

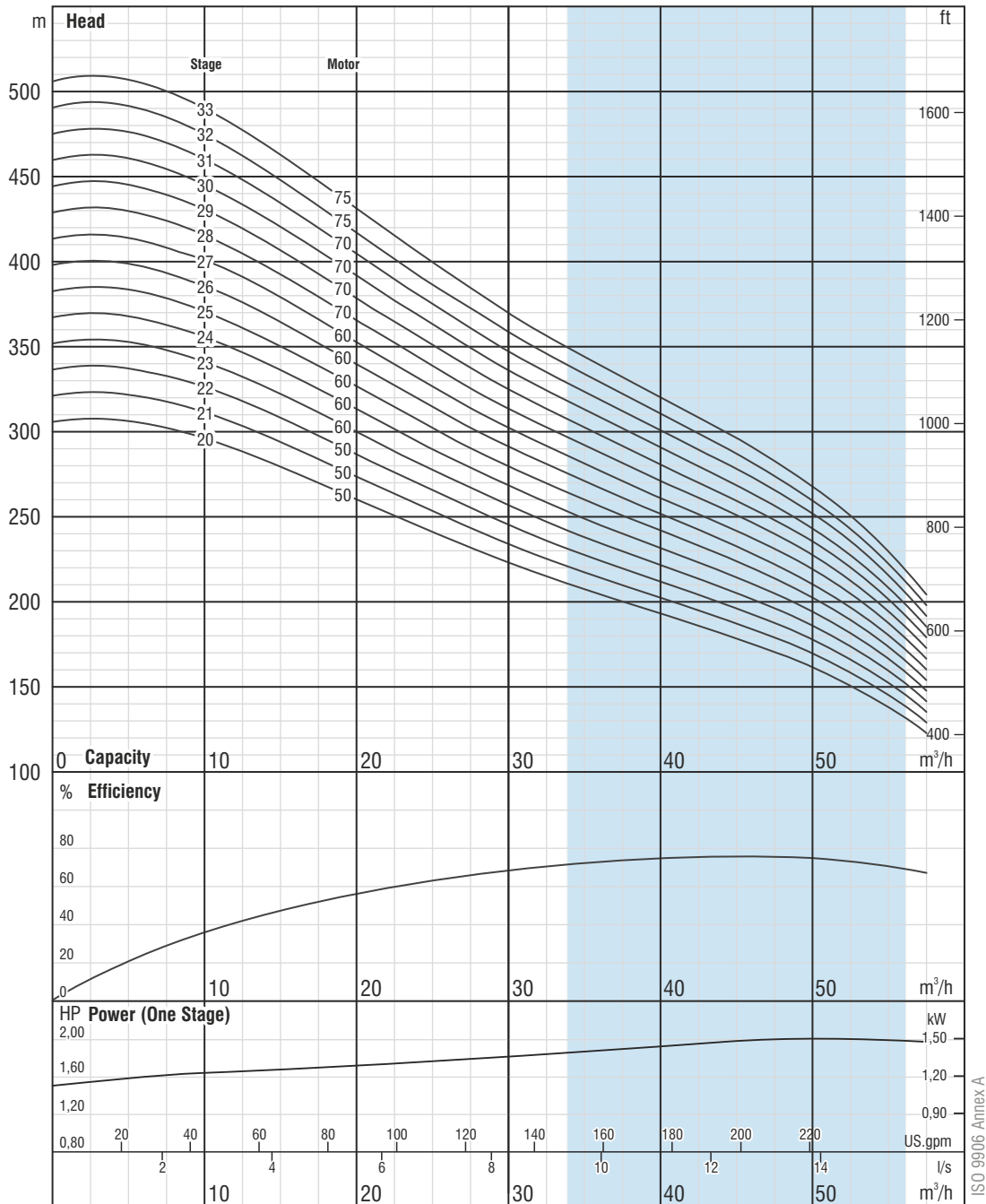
SPS 646 Performance Table

Product Code	Stage	Motor		Current	m³/h	Head (meter)							
		kW	HP			0	22	29	36	43	47	50	58
SPS 646/20	20	37	50	81,6	0	306	255	228	206	185	174	162	124
SPS 646/21	21	37	50	81,6	6	321	268	240	216	195	183	170	131
SPS 646/22	22	37	50	81,6	8	337	280	251	226	204	192	178	137
SPS 646/23	23	45	60	90	10	352	293	263	236	213	200	186	143
SPS 646/24	24	45	60	90	12	367	306	274	247	222	209	194	149
SPS 646/25	25	45	60	90	13	383	319	285	257	232	218	202	155
SPS 646/26	26	45	60	90	14	398	331	297	267	241	227	210	162
SPS 646/27	27	45	60	90	16	413	344	308	278	250	235	218	168
SPS 646/28	28	52	70	106	6	428	357	320	288	259	244	226	174
SPS 646/29	29	52	70	106	8	444	370	331	298	269	253	234	180
SPS 646/30	30	52	70	106	10	459	382	343	308	278	262	242	187
SPS 646/31	31	52	70	106	12	474	395	354	319	287	270	250	193
SPS 646/32	32	55	75	109	13	490	408	365	329	296	279	258	199
SPS 646/33	33	55	75	109	16	505	421	377	339	306	288	267	205



Well Stainless Steel Submersible Pumps

SPS 646 Performance Curve (20 to 33 stage)



The right to change design and all specifications without prior notice reserved.

SPS 646 - 50Hz

Features

- Rpm :2900
- Rotation :CCW
- Maximum sand content is 50 gr/m³
- 4" inside threaded outlet connection diameter

Materials

Diffuser & Impeller:
AISI 304L - Stainless Steel

Pump Shaft / Coupling:
AISI 420 - Stainless Steel

Strainer:
AISI 304 - Stainless Steel

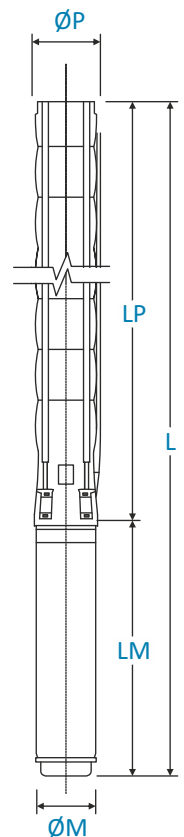
Technical Datasheets

SPS 660 Dimension and Weight Table

Product Code	Stage	Motor		Dimensions					Weight		
		kW	HP	L	LM	LP	ØM	ØP	Motor	Pump	Total
SPS 660/02	2	4	5,5	1143	649	494	142	144	40	10	50
SPS 660/03	3	5,5	7,5	1284	678	606	142	144	43.5	12	55.5
SPS 660/04	4	7,5	10	1476	758	718	142	144	50	15	65
SPS 660/05	5	9,3	12,5	1630	800	830	142	144	55	18	73
SPS 660/06	6	11	15	1793	851	942	142	144	60	20	80
SPS 660/07	7	13	17,5	1965	911	1054	142	144	65	23	88
SPS 660/08	8	15	20	2139	973	1166	142	144	72	26	98
SPS 660/09	9	18,5	25	2284	1006	1278	142	144	76	28	104
SPS 660/10	10	18,5	25	2396	1006	1390	142	144	76	31	107
SPS 660/11	11	22	30	2608/2392	1106/890	1502	142/172	144	87/86	34	121/120
SPS 660/12	12	22	30	2720/2504	1106/890	1614	142/172	144	87/86	36	123/122
SPS 660/13	13	27	35	2943/2666	1217/940	1726	142/172	144	98/91	39	137/130
SPS 660/14	14	27	35	3055/2778	1217/940	1838	142/172	144	98/91	42	140/133
SPS 660/15	15	30	40	3197/2930/3006	1247/980/1056	1950	142/172/192	144	103/103/129	44	147/147/173
SPS 660/16	16	30	40	3309/3042/3118	1247/980/1056	2062	142/172/192	144	103/103/129	47	150/150/176
SPS 660/17	17	30	40	3421/3154/3230	1247/980/1056	2174	142/172/192	144	103/103/129	50	153/153/179

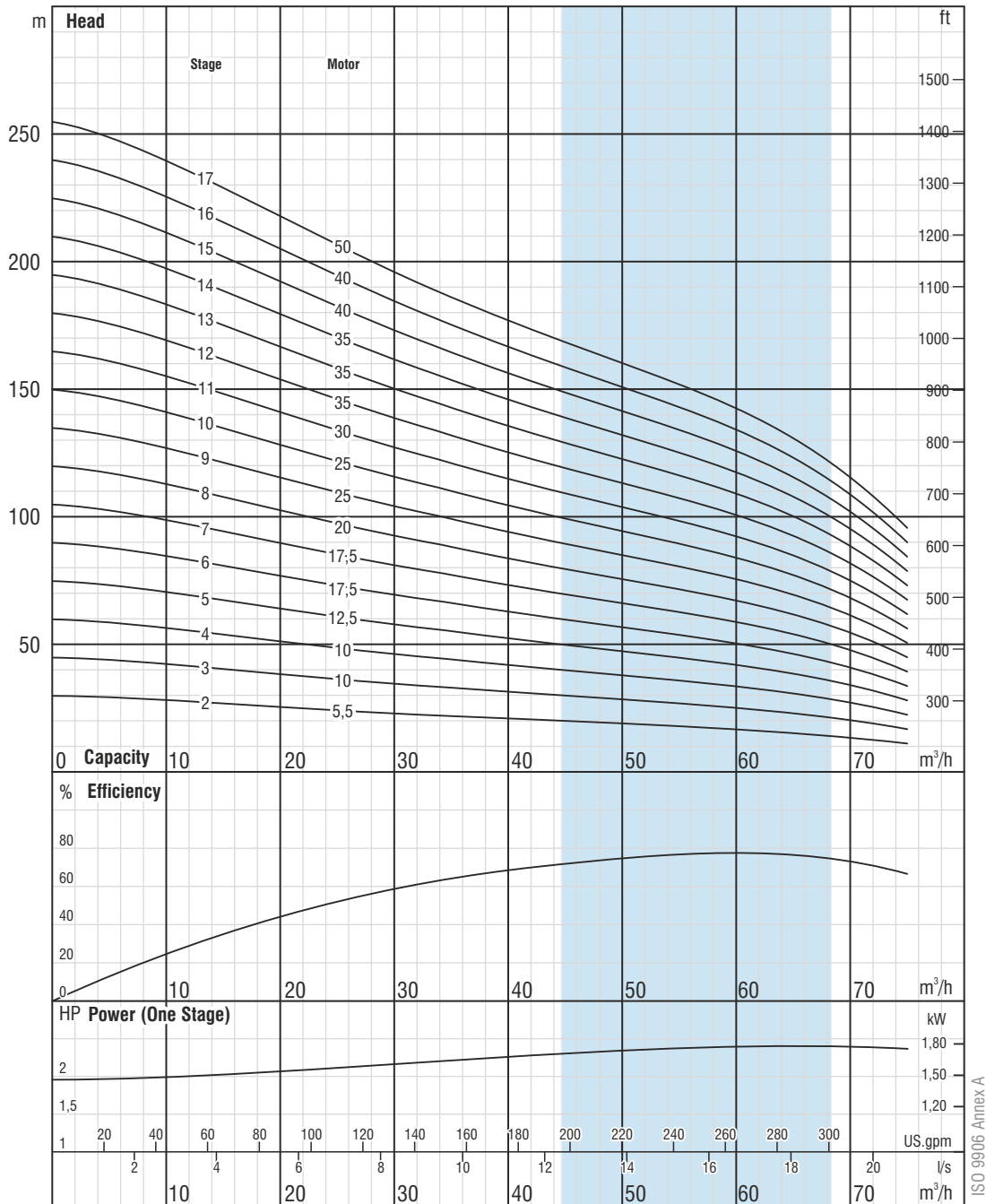
SPS 660 Performance Table

Product Code	Stage	Motor		Current	m³/h	Head (meter)									
		kW	HP			0	30	36	43	51	58	65	72	76	
SPS 660/02	2	4	5,5	10,2	30	23	22	20	19	17	15	12	10		
SPS 660/03	3	5,5	7,5	13,3	44	35	33	31	28	26	23	18	15		
SPS 660/04	4	7,5	10	17,2	59	47	44	41	38	35	31	25	20		
SPS 660/05	5	9,3	12,5	20,8	74	59	55	51	47	43	38	31	25		
SPS 660/06	6	11	15	23,7	89	70	66	61	56	52	46	37	30		
SPS 660/07	7	13	17,5	28,7	104	82	77	72	66	60	53	43	35		
SPS 660/08	8	15	20	33,1	118	94	88	82	75	69	61	49	40		
SPS 660/09	9	18,5	25	41,8	133	105	99	92	85	78	69	55	45		
SPS 660/10	10	18,5	25	41,8	148	117	110	102	94	86	76	62	50		
SPS 660/11	11	22	30	48,5	163	129	121	112	104	95	84	68	55		
SPS 660/12	12	22	30	48,5	178	140	132	123	113	104	92	74	60		
SPS 660/13	13	27	35	56,4	192	152	143	133	122	112	99	80	65		
SPS 660/14	14	27	35	56,4	207	164	154	143	132	121	107	86	70		
SPS 660/15	15	30	40	61,7	222	176	165	153	141	130	114	92	75		
SPS 660/16	16	30	40	61,7	237	187	176	164	151	138	122	99	80		
SPS 660/17	17	30	40	61,7	252	199	187	174	160	147	130	105	85		



Well Stainless Steel Submersible Pumps

SPS 660 Performance Curve (02 to 17 stage)



The right to change design and all specifications without prior notice reserved.

SPS 660 - 50Hz

Features

- Rpm :2900
- Rotation :CCW
- Maximum sand content is 50 gr/m³
- 4" inside threaded outlet connection diameter

Materials

Diffuser & Impeller:
AISI 304L - Stainless Steel

Pump Shaft / Coupling:
AISI 420 - Stainless Steel

Strainer:
AISI 304 - Stainless Steel

ISO 9906 Annex A

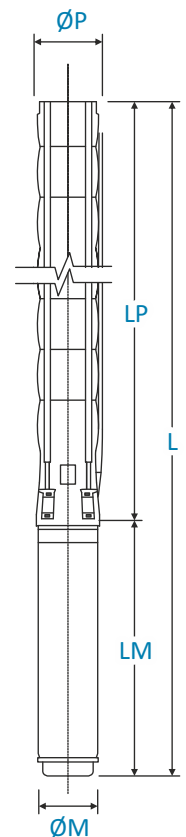
Technical Datasheets

SPS 660 Dimension and Weight Table

Product Code	Stage	Motor		Dimensions					Weight		
		kW	HP	L	LM	LP	ØM	ØP	Motor	Pump	Total
SPS 660/18	18	37	50	3633/3346/3402	1347/1060/1116	2286	142/172/192	144	110/113/138	52	162/165/190
SPS 660/19	19	37	50	3745/3458/3514	1347/1060/1116	2398	142/172/192	144	110/113/138	55	165/168/193
SPS 660/20	20	37	50	3857/3570/3626	1347/1060/1116	2510	142/172/192	144	110/113/138	58	168/171/196
SPS 660/21	21	37	50	3969/3682/3738	1347/1060/1116	2622	142/172/192	144	110/113/138	60	170/173/198
SPS 660/22	22	45	60	3873/3935	1139/1201	2734	172/192	144	127/152	63	190/215
SPS 660/23	23	45	60	3985/4047	1139/1201	2846	172/192	144	127/152	65	192/217
SPS 660/24	24	45	60	4097/4159	1139/1201	2958	172/192	144	127/152	68	195/220
SPS 660/25	25	52	70	4288/4356	1218/1286	3070	172/192	144	138/170	71	209/241
SPS 660/26	26	52	70	4400/4468	1218/1286	3182	172/192	144	138/170	73	211/243
SPS 660/27	27	52	70	4512/4580	1218/1286	3294	172/192	144	138/170	76	214/246
SPS 660/28	28	52	70	4624/4692	1218/1286	3406	172/192	144	138/170	79	217/249
SPS 660/29	29	55	75	4768/4804	1250/1286	3518	172/192	144	138/170	81	219/251
SPS 660/30	30	55	75	4880/4916	1250/1286	3630	172/192	144	138/170	84	222/254

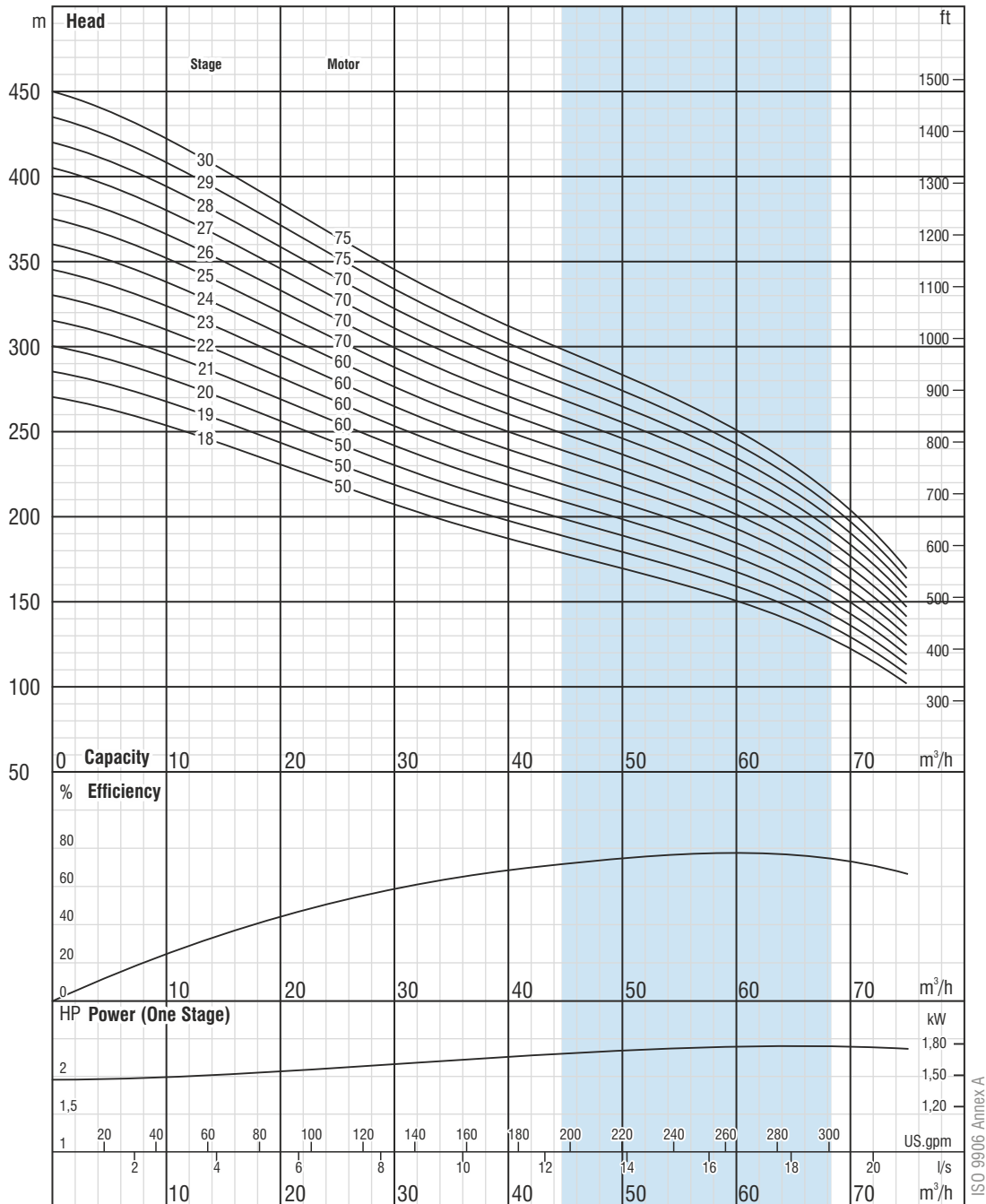
SPS 660 Performance Table

Product Code	Stage	Motor		Current	m³/h	Head (meter)									
		kW	HP			0	30	36	43	51	58	65	72	76	
SPS 660/18	18	37	50	74,3	0	266	211	198	184	169	155	137	111	90	
SPS 660/19	19	37	50	74,3	8,3	281	222	209	194	179	164	145	117	95	
SPS 660/20	20	37	50	74,3	10	296	234	220	204	188	173	153	123	100	
SPS 660/21	21	37	50	74,3	11,9	311	246	231	215	198	181	160	129	105	
SPS 660/22	22	45	60	90,4	14,2	326	257	242	225	207	190	168	136	110	
SPS 660/23	23	45	60	90,4	16,1	340	269	253	235	216	199	176	142	115	
SPS 660/24	24	45	60	90,4	18,1	355	281	264	245	226	207	183	148	120	
SPS 660/25	25	52	70	103,3	20	370	293	275	256	235	216	191	154	125	
SPS 660/26	26	52	70	103,3	21,1	385	304	285	266	245	225	198	160	130	
SPS 660/27	27	52	70	103,3		400	316	296	276	254	233	206	166	135	
SPS 660/28	28	52	70	103,3		414	328	307	286	264	242	214	173	140	
SPS 660/29	29	55	75	110,5		429	339	318	296	273	250	221	179	145	
SPS 660/30	30	55	75	110,5		444	351	329	307	282	259	229	185	150	



Well Stainless Steel Submersible Pumps

SPS 660 Performance Curve (18 to 30 stage)



The right to change design and all specifications without prior notice reserved.

SPS 660 - 50Hz

Features

- Rpm :2900
- Rotation :CCW
- Maximum sand content is 50 gr/m³
- 4" inside threaded outlet connection diameter

Materials

Diffuser & Impeller:
AISI 304L - Stainless Steel

Pump Shaft / Coupling:
AISI 420 - Stainless Steel

Strainer:
AISI 304 - Stainless Steel

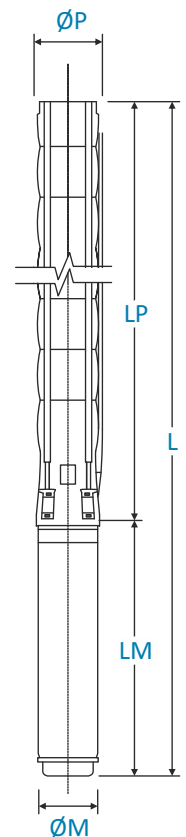
Technical Datasheets

SPS 877 Dimension and Weight Table

Product Code	Stage	Motor		Dimensions					Weight		
		kW	HP	L	LM	LP	ØM	ØP	Motor	Pump	Total
SPS 877/01	1	4	5,5	1128	649	479	142	172	40	24	64
SPS 877/02	2	7,5	10	1365	758	607	142	172	50	29	79
SPS 877/03	3	11	15	1586	851	735	142	172	60	33	93
SPS 877/04	4	15	20	1836	973	863	142	172	72	36	108
SPS 877/05	5	18,5	25	1997	1006	991	142	172	76	39	115
SPS 877/06	6	22	30	2225/2009	1106/890	1.119	142/172	172	87/86	43	130/129
SPS 877/07	7	26	35	2464/2187	1217/940	1.247	142/172	172	98/91	47	145/138
SPS 877/08	8	30	40	2622/2355/2431	1247/980/1056	1.375	142/172/192	172	103/103/129	53	156/156/182
SPS 877/09	9	37	50	2850/2563/2619	1347/1060/1116	1.503	142/172/192	172	110/113/138	57	167/170/195
SPS 877/10	10	45	60	2770/2832	1139/1201	1.631	172/192	172	127/152	61	188/213
SPS 877/11	11	45	60	2898/2960	1139/1201	1.759	172/192	172	127/152	65	192/217
SPS 877/12	12	45	60	3042/3104	1139/1201	1.903	172/192	172	127/152	67	194/219
SPS 877/13	13	52	70	3249/3317	1218/1286	2.031	172/192	172	138/170	71	209/241
SPS 877/14	14	55	75	3409/3445	1250/1286	2.159	172/192	172	138/170	74	212/244
SPS 877/15	15	60	80	3628	1341	2.287	192	172	185	78	263
SPS 877/16	16	67	90	3781	1366	2.415	192	172	186	83	269
SPS 877/17	17	67	90	3909	1366	2.543	192	172	186	87	273
SPS 877/18	18	75	100	4062	1391	2.671	192	172	195	91	286
SPS 877/19	19	75	100	4190	1391	2.799	192	172	195	93	288
SPS 877/20	20	81	110	4398/4297	1471/1370	2.927	192/231	172	210/256	97	307/353
SPS 877/21	21	81	110	4526/4425	1471/1370	3.055	192/231	172	210/256	99	309/355
SPS 877/22	22	92	125	4719/4613	1536/1430	3.183	192/231	172	212/284	103	315/387

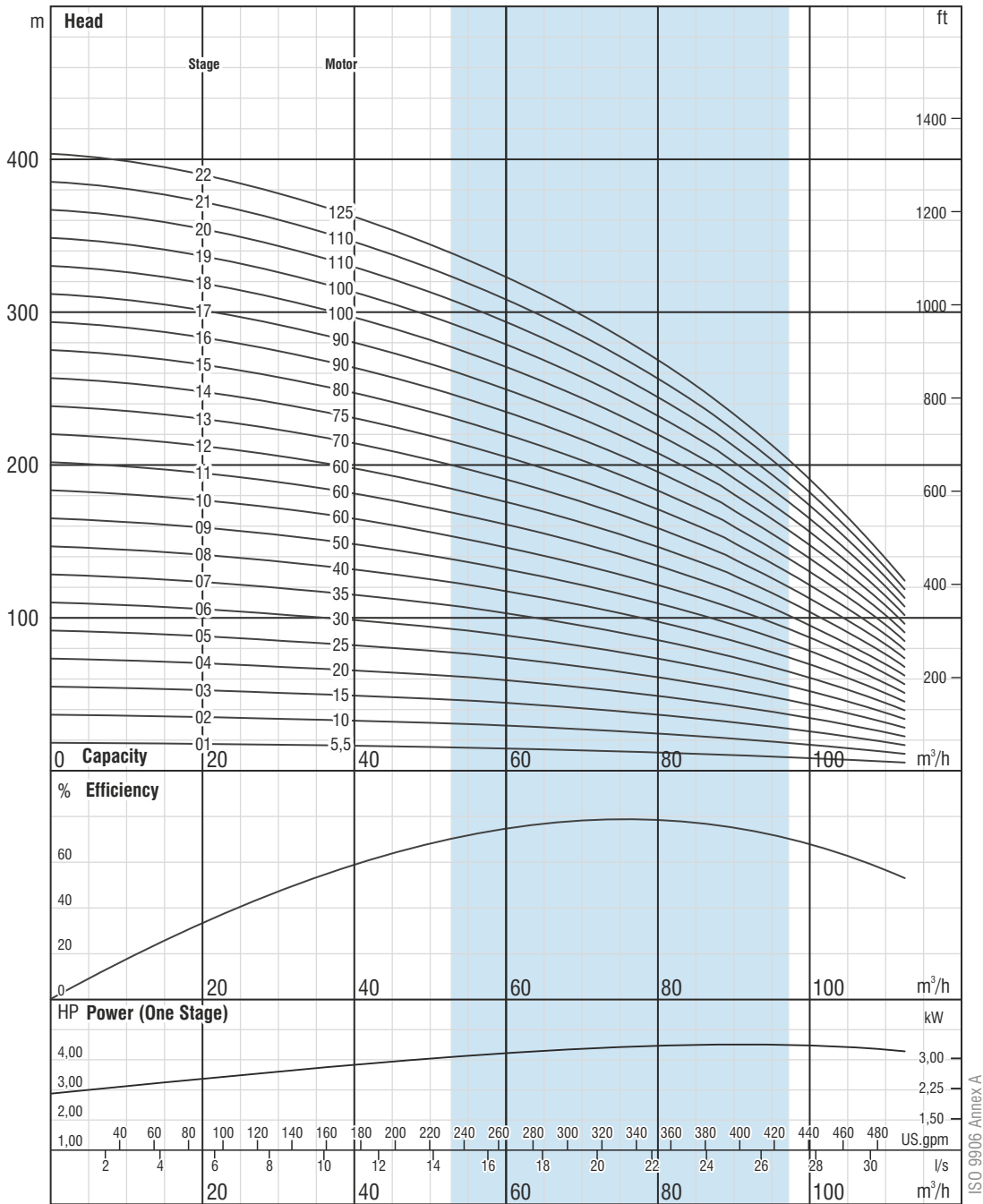
SPS 877 Performance Table

Product Code	Stage	Motor		Current	m³/h	Head (meter)						
		kW	HP			0	58	65	72	79	86	109
SPS 877/01	1	4	5,5	10,2	0	18	15	14	13	12	11	6
SPS 877/02	2	7,5	10	17,2	0	37	30	28	26	24	22	11
SPS 877/03	3	11	15	23,7	0	55	44	42	39	36	32	17
SPS 877/04	4	15	20	33,1	0	73	59	56	52	48	43	23
SPS 877/05	5	18,5	25	41,8	0	92	74	70	65	60	54	28
SPS 877/06	6	22	30	48,5	0	110	89	84	78	72	65	34
SPS 877/07	7	26	35	56,4	0	128	103	98	91	84	76	40
SPS 877/08	8	30	40	64,6	0	147	118	112	104	96	86	45
SPS 877/09	9	37	50	81,6	0	165	133	126	117	108	97	51
SPS 877/10	10	45	60	90	0	183	148	139	130	120	108	57
SPS 877/11	11	45	60	90	0	202	162	153	143	132	119	62
SPS 877/12	12	45	60	90	0	220	177	167	156	144	130	68
SPS 877/13	13	52	70	106	0	238	192	181	169	156	141	74
SPS 877/14	14	55	75	109	0	257	207	195	183	168	151	79
SPS 877/15	15	60	80	119,1	0	275	221	209	196	180	162	85
SPS 877/16	16	67	90	134,6	0	293	236	223	209	192	173	91
SPS 877/17	17	67	90	134,6	0	312	251	237	222	204	184	96
SPS 877/18	18	75	100	150,7	0	330	266	251	235	216	195	102
SPS 877/19	19	75	100	150,7	0	348	280	265	248	228	205	108
SPS 877/20	20	81	110	162,7	0	367	295	279	261	240	216	113
SPS 877/21	21	81	110	162,7	0	385	310	293	274	252	227	119
SPS 877/22	22	92	125	184,8	0	403	325	307	287	264	238	125



Well Stainless Steel Submersible Pumps

SPS 877 Performance Curve (01 to 22 stage)



The right to change design and all specifications without prior notice reserved.

SPS 877 - 50Hz

Features

- Rpm :2900
- Rotation :CCW
- Maximum sand content is 50 gr/m³
- 5" inside threaded outlet connection diameter

Materials

Diffuser & Impeller:
AISI 304L - Stainless Steel

Pump Shaft / Coupling:
AISI 420 - Stainless Steel

Strainer:
AISI 304 - Stainless Steel

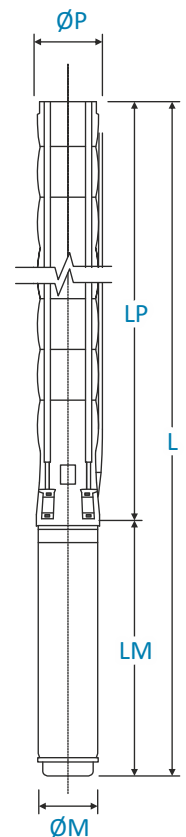
Technical Datasheets

SPS 895 Dimension and Weight Table

Product Code	Stage	Motor		Dimensions					Weight		
		kW	HP	L	LM	LP	ØM	ØP	Motor	Pump	Total
SPS 895/01	1	5,5	7,5	1249	678	571	142	172	43.5	26	69.5
SPS 895/02	2	11	15	1550	851	699	142	172	60	30	90
SPS 895/03	3	15	20	1800	973	827	142	172	72	34	106
SPS 895/04	4	22	30	2061/1845	1106/890	955	142/172	172	87/86	38	125/124
SPS 895/05	5	30	40	2330/2063/2139	1247/980/1056	1083	142/172/192	172	103/103/129	42	145/145/171
SPS 895/06	6	37	50	2558/2271/2327	1347/1060/1116	1211	142/172/192	172	110/113/138	46	156/159/184
SPS 895/07	7	37	50	2686/2399/2455	1347/1060/1116	1339	142/172/192	172	110/113/138	50	160/163/188
SPS 895/08	8	45	60	2606/2668	1139/1201	1467	172/192	172	127/152	54	181/206
SPS 895/09	9	45	60	2734/2796	1139/1201	1595	172/192	172	127/152	58	185/210
SPS 895/10	10	55	75	2973/3009	1250/1286	1723	172/192	172	138/170	62	200/232
SPS 895/11	11	60	80	3192	1341	1851	192	172	185	66	251
SPS 895/12	12	67	90	3345	1366	1979	192	172	186	70	256
SPS 895/13	13	75	100	3498	1391	2107	192	172	195	74	269
SPS 895/14	14	75	100	3626	1391	2235	192	172	195	78	273
SPS 895/15	15	81	110	3834/3733	1471/1370	2363	192/231	172	210/256	82	292/338
SPS 895/16	16	92	125	4027/3921	1536/1430	2491	192/231	172	212/284	86	298/370
SPS 895/17	17	92	125	4155/4049	1536/1430	2619	192/231	172	212/284	90	302/374
SPS 895/18	18	110	150	4257	1510	2747	231	172	311	94	405
SPS 895/19	19	110	150	4385	1510	2875	231	172	311	98	409
SPS 895/20	20	110	150	4513	1510	3003	231	172	311	102	413

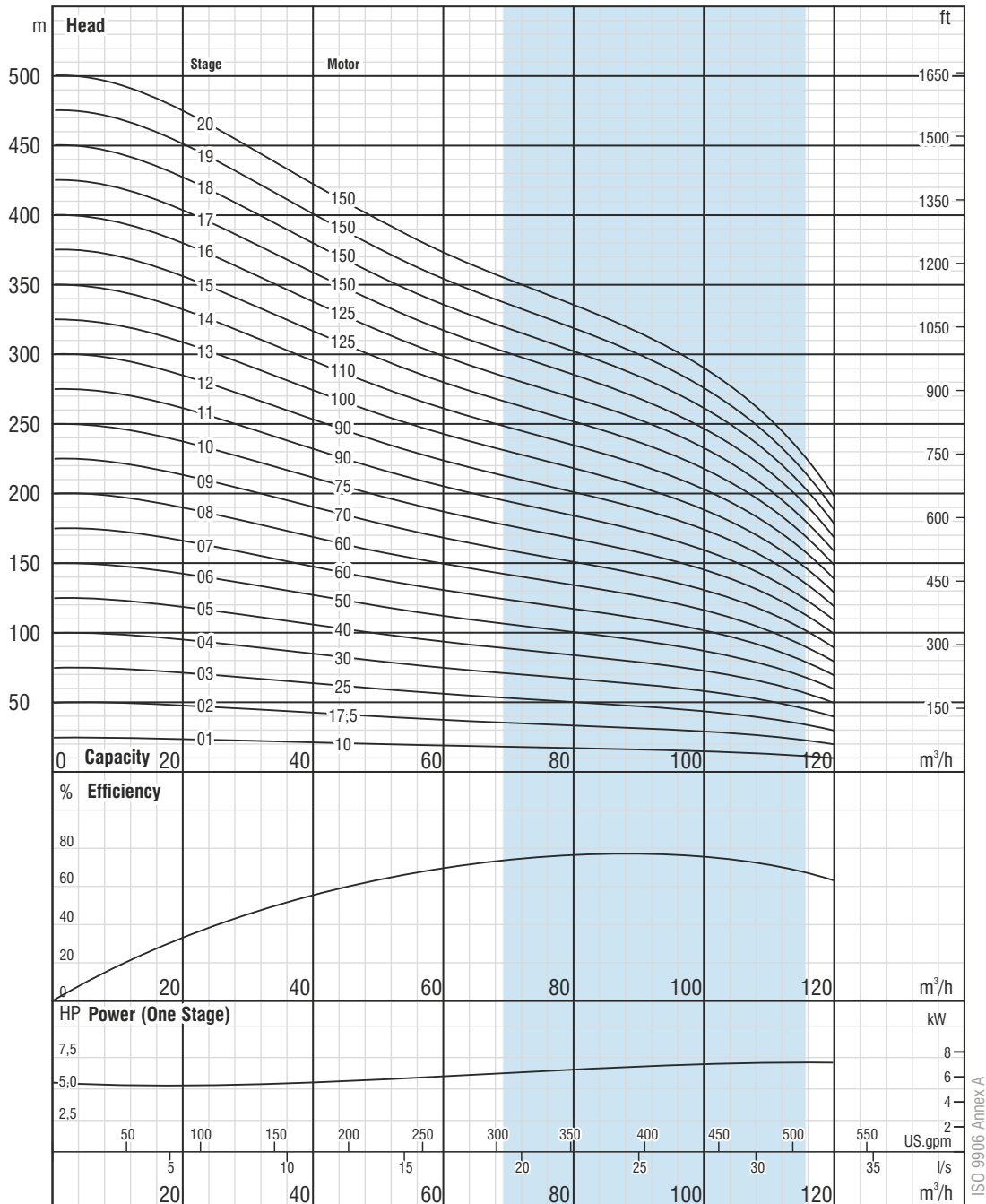
SPS 895 Performance Table

Product Code	Stage	Motor		Current	m³/h	Head (meter)									
		kW	HP			l/s	0	20	40	60	70	80	90	100	110
							0	5,6	11,1	16,7	19,4	22,2	25	27,8	30,6
SPS 895/01	1	5,5	7,5	13,3	25	24	21	19	18	17	16	15	13		
SPS 895/02	2	11	15	23,7	50	47	42	37	35	34	32	29	25		
SPS 895/03	3	15	20	33,1	75	71	63	56	53	51	48	44	38		
SPS 895/04	4	22	30	48,5	100	95	84	75	71	67	64	58	51		
SPS 895/05	5	30	40	61,7	125	119	105	93	89	84	79	73	63		
SPS 895/06	6	37	50	74,3	150	142	126	112	106	101	95	88	76		
SPS 895/07	7	37	50	74,3	175	166	148	131	124	118	111	102	89		
SPS 895/08	8	45	60	90,4	200	190	169	149	142	135	127	117	101		
SPS 895/09	9	45	60	90,4	225	214	190	168	159	152	143	131	114		
SPS 895/10	10	55	75	110,5	250	237	211	187	177	168	159	146	127		
SPS 895/11	11	60	80	119,1	275	261	232	205	195	185	175	161	139		
SPS 895/12	12	67	90	134,6	300	285	253	224	213	202	191	175	152		
SPS 895/13	13	75	100	150,7	325	309	274	243	230	219	206	190	165		
SPS 895/14	14	75	100	150,7	350	332	295	261	248	236	222	204	177		
SPS 895/15	15	81	110	159	375	356	316	280	266	253	238	219	190		
SPS 895/16	16	92	125	179	400	380	337	299	283	269	254	234	203		
SPS 895/17	17	92	125	179	425	404	358	317	301	286	270	248	215		
SPS 895/18	18	110	150	216	450	427	379	336	319	303	286	263	228		
SPS 895/19	19	110	150	216	475	451	401	355	337	320	302	277	241		
SPS 895/20	20	110	150	216	500	475	422	373	354	337	318	292	253		



Well Stainless Steel Submersible Pumps

SPS 895 Performance Curve (01 to 20 stage)



The right to change design and all specifications without prior notice reserved.

SPS 895 - 50Hz

Features

- Rpm :2900
- Rotation :CCW
- Maximum sand content is 50 gr/m³
- 5" inside threaded outlet connection diameter

Materials

Diffuser & Impeller:
AISI 304L - Stainless Steel

Pump Shaft / Coupling:
AISI 420 - Stainless Steel

Strainer:
AISI 304 - Stainless Steel

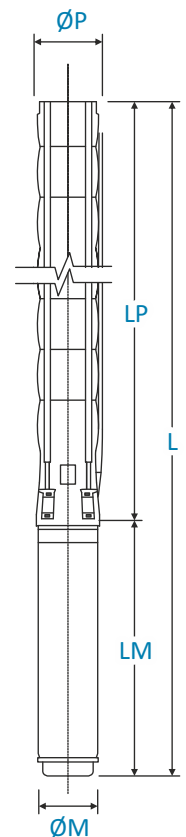
Technical Datasheets

SPS 8105 Dimension and Weight Table

Product Code	Stage	Motor		Dimensions					Weight		
		kW	HP	L	LM	LP	ØM	ØP	Motor	Pump	Total
SPS 8105/01	1	7,5	10	1366/1249	795/678	571	95/142	172	28.8/43.5	26	54.8/69.5
SPS 8105/02	2	11	15	1499	800	699	142	172	55	30	85
SPS 8105/03	3	18,5	25	1800	973	827	142	172	72	34	106
SPS 8105/04	4	22	30	1961/1795	1006/840	955	142/172	172	76/81	38	114/119
SPS 8105/05	5	26,5	35	2189/1973	1106/890	1083	142/172	172	87/86	42	129/128
SPS 8105/06	6	37	50	2458/2191/2267	1247/980/1056	1211	142/172/192	172	103/103/129	46	149/149/175
SPS 8105/07	7	37	50	2586/2319/2395	1247/980/1056	1339	142/172/192	172	103/103/129	50	153/153/179
SPS 8105/08	8	45	60	2814/2527/2583	1347/1060/1116	1467	142/172/192	172	110/113/138	54	164/167/192
SPS 8105/09	9	52	70	2734/2796	1139/1201	1595	172/192	172	127/152	58	185/210
SPS 8105/10	10	55	75	2941/3009	1218/1286	1723	172/192	172	138/170	62	200/232
SPS 8105/11	11	60	80	3101/3137	1250/1286	1851	172/192	172	149/170	66	215/236
SPS 8105/12	12	67	90	3261/3320	1282/1341	1979	172/192	172	160/185	70	230/255
SPS 8105/13	13	75	100	3473/3357	1366/1250	2107	192/231	172	186/200	74	260/274
SPS 8105/14	14	75	100	3601/3485	1366/1250	2235	192/231	172	186/200	78	264/278
SPS 8105/15	15	81	110	3754/3673	1391/1310	2363	192/231	172	195/228	82	277/310
SPS 8105/16	16	92	125	3962/3861	1471/1370	2491	192/231	172	210/256	86	296/342
SPS 8105/17	17	92	125	4090/3989	1471/1370	2619	192/231	172	210/256	90	300/346
SPS 8105/18	18	110	150	4348/4177	1601/1430	2747	192/231	172	235/284	94	329/378
SPS 8105/19	19	110	150	4476/4305	1601/1430	2875	192/231	172	235/284	98	333/382
SPS 8105/20	20	110	150	4604/4433	1601/1430	3003	192/231	172	235/284	102	337/386

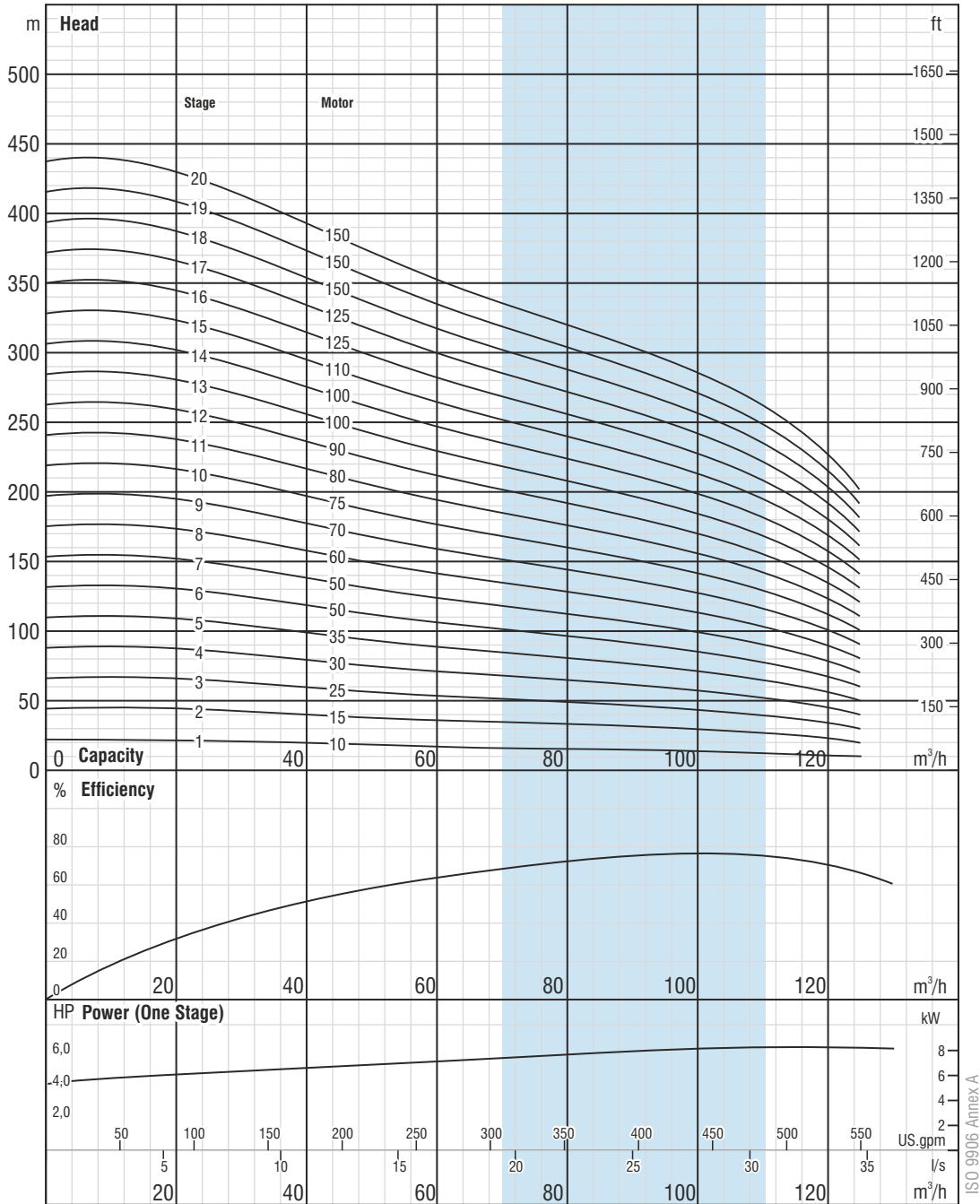
SPS 8105 Performance Table

Product Code	Stage	Motor		Current	m³/h	Head (meter)											
		kW	HP			0	20	40	70	90	100	110	125				
SPS 8105/01	1	7,5	10	17.2	0	22	21	20	17	15	14	13	10				
SPS 8105/02	2	11	15	23.7	0	44	43	39	33	30	28	26	20				
SPS 8105/03	3	18,5	25	41.8	0	65	64	59	50	45	43	39	30				
SPS 8105/04	4	22	30	48.5	0	87	86	78	67	61	57	52	40				
SPS 8105/05	5	26,5	35	56.4	0	109	107	98	84	76	71	65	50				
SPS 8105/06	6	37	50	74.3	0	131	129	117	100	91	85	78	61				
SPS 8105/07	7	37	50	74.3	0	153	150	137	117	106	100	91	71				
SPS 8105/08	8	45	60	90.0	0	175	171	157	134	121	114	104	81				
SPS 8105/09	9	52	70	106	0	196	193	176	151	136	128	117	91				
SPS 8105/10	10	55	75	109	0	218	214	196	167	152	142	130	101				
SPS 8105/11	11	60	80	119	0	240	236	215	184	167	157	143	111				
SPS 8105/12	12	67	90	135	0	262	257	235	201	182	171	156	121				
SPS 8105/13	13	75	100	151	0	284	279	255	217	197	185	169	131				
SPS 8105/14	14	75	100	151	0	305	300	274	234	212	199	182	141				
SPS 8105/15	15	81	110	163	0	327	321	294	251	227	214	195	151				
SPS 8105/16	16	92	125	185	0	349	343	313	268	242	228	208	161				
SPS 8105/17	17	92	125	185	0	371	364	333	284	258	242	221	171				
SPS 8105/18	18	110	150	216	0	393	386	352	301	273	256	234	182				
SPS 8105/19	19	110	150	216	0	415	407	372	318	288	271	247	192				
SPS 8105/20	20	110	150	216	0	436	429	392	334	303	285	260	202				



Well Stainless Steel Submersible Pumps

SPS 8105 Performance Curve (01 to 20 stage)



The right to change design and all specifications without prior notice reserved.

SPS 8105 - 50Hz

Features

- Rpm :2900
- Rotation :CCW
- Maximum sand content is 50 gr/m³
- 5" inside threaded outlet connection diameter

Materials

Diffuser & Impeller:
AISI 304L - Stainless Steel

Pump Shaft / Coupling:
AISI 420 - Stainless Steel

Strainer:
AISI 304 - Stainless Steel

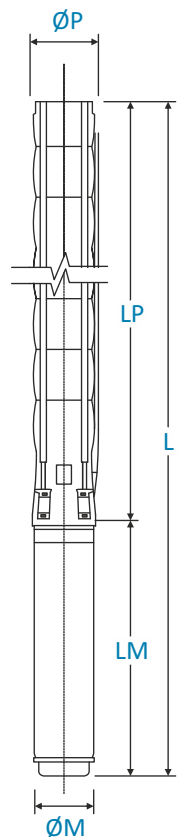
Technical Datasheets

SPS 110 Dimension and Weight Table

Product Code	Stage	Motor		Dimensions					Weight		
		kW	HP	L	LM	LP	ØM	ØP	Motor	Pump	Total
SPS 110/01	1	7,5	10	1444	758	686	142	213	50	32	82
SPS 110/02	2	15	20	1815	973	842	142	213	72	38	110
SPS 110/03	3	22	30	2103/1887	1106/890	997	142/172	213	87/86	45	132/131
SPS 110/04	4	30	40	2400/2133/2209	1247/980/1056	1153	142/172/192	213	103/103/129	51	154/154/180
SPS 110/05	5	37	50	2656/2369/2425	1347/1060/1116	1309	142/172/192	213	110/113/138	57	167/170/195
SPS 110/06	6	45	60	2604/2666	1139/1201	1465	172/192	213	127/152	64	191/216
SPS 110/07	7	52	70	2838/2906	1218/1286	1620	172/192	213	138/170	70	208/240
SPS 110/08	8	60	80	3117	1341	1776	192	213	185	76	261
SPS 110/09	9	67	90	3298	1366	1932	192	213	186	83	269
SPS 110/10	10	75	100	3478	1391	2087	192	213	195	89	284
SPS 110/11	11	81	110	3714/3613	1471/1370	2243	192/231	213	210/256	95	305/351
SPS 110/12	12	92	125	3935/3829	1536/1430	2399	192/231	213	212/284	101	313/385
SPS 110/13	13	92	125	4090/3984	1536/1430	2554	192/231	213	212/284	108	320/392
SPS 110/14	14	110	150	4220	1510	2710	231	213	311	114	425
SPS 110/15	15	110	150	4376	1510	2866	231	213	311	120	431
SPS 110/16	16	129	175	4632	1610	3022	231	213	338	127	465
SPS 110/17	17	129	175	4787	1610	3177	231	213	338	133	471
SPS 110/18	18	129	175	4943	1610	3333	231	213	338	139	477
SPS 110/19	19	147	200	5229	1740	3489	231	213	370	145	515
SPS 110/20	20	147	200	5384	1740	3644	231	213	370	152	522

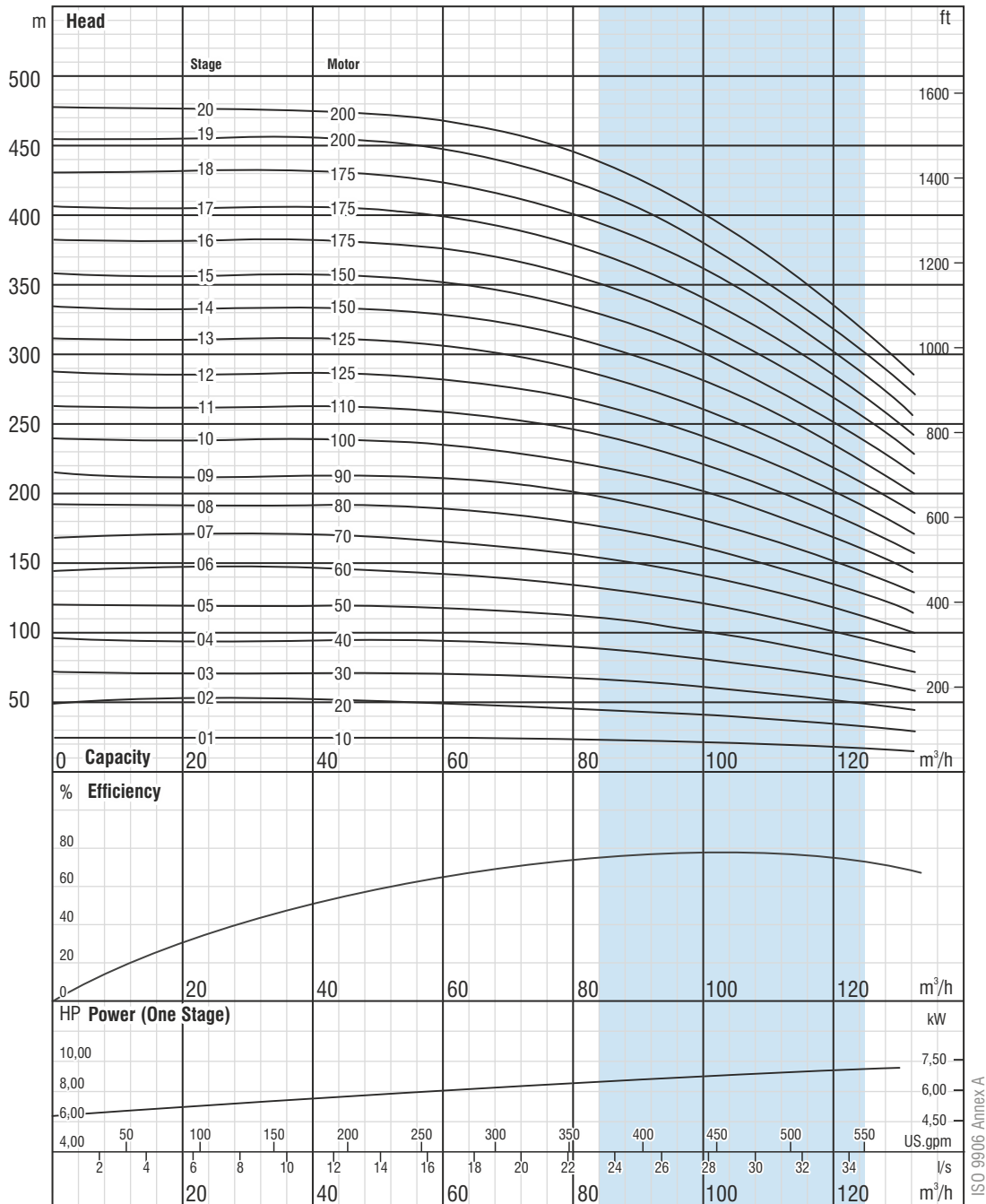
SPS 110 Performance Table

Product Code	Stage	Motor		Current	m³/h	Head (meter)										
		kW	HP			0	70	80	90	100	110	120	130			
SPS 110/01	1	7,5	10	17,2	27	23	22	21	20	18	16	14				
SPS 110/02	2	15	20	33,1	55	45	43	42	39	36	33	28				
SPS 110/03	3	22	30	48,5	82	68	65	63	59	55	49	43				
SPS 110/04	4	30	40	61,7	110	90	87	83	79	73	66	57				
SPS 110/05	5	37	50	74,3	137	113	109	104	98	91	82	71				
SPS 110/06	6	45	60	90,4	165	135	130	125	118	109	99	85				
SPS 110/07	7	52	70	103,3	192	158	152	146	138	128	115	99				
SPS 110/08	8	60	80	119,1	220	180	174	167	158	146	131	114				
SPS 110/09	9	67	90	134,6	247	203	196	188	177	164	148	128				
SPS 110/10	10	75	100	150,7	274	225	217	208	197	182	164	142				
SPS 110/11	11	81	110	159	302	248	239	229	217	200	181	156				
SPS 110/12	12	92	125	179	329	270	261	250	236	219	197	170				
SPS 110/13	13	92	125	179	357	293	283	271	256	237	214	185				
SPS 110/14	14	110	150	216	384	315	304	292	276	255	230	199				
SPS 110/15	15	110	150	216	412	338	326	313	295	273	247	213				
SPS 110/16	16	129	175	248	439	360	348	333	315	292	263	227				
SPS 110/17	17	129	175	248	466	383	370	354	335	310	279	241				
SPS 110/18	18	129	175	248	494	405	391	375	354	328	296	256				
SPS 110/19	19	147	200	282	521	428	413	396	374	346	312	270				
SPS 110/20	20	147	200	282	549	450	435	417	394	364	329	284				



Well Stainless Steel Submersible Pumps

SPS 110 Performance Curve (01 to 20 stage)



The right to change design and all specifications without prior notice reserved.

SPS 110 - 50Hz

Features

- Rpm :2900
- Rotation :CCW
- Maximum sand content is 50 gr/m³
- 6" inside threaded outlet connection diameter

Materials

Diffuser & Impeller:
AISI 304L - Stainless Steel

Pump Shaft / Coupling:
AISI 420 - Stainless Steel

Strainer:
AISI 304 - Stainless Steel

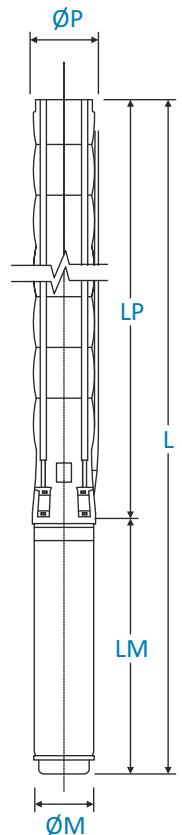
Technical Datasheets

SPS 125 Dimension and Weight Table

Product Code	Stage	Motor		Dimensions					Weight		
		kW	HP	L	LM	LP	ØM	ØP	Motor	Pump	Total
SPS 125/01.B1	1	9,3	12,5	1486	800	686	142	213	55	32	87
SPS 125/01	1	11	15	1537	851	686	142	213	60	32	92
SPS 125/02.B2	2	18,5	25	1848	1006	842	142	213	76	39	115
SPS 125/02	2	22	30	1948/1732	1106/890	842	142/172	213	87/86	39	126/125
SPS 125/03.B1	3	30	40	2244/1977/2053	1247/980/1056	997	142/172/192	213	103/103/129	45	148/148/174
SPS 125/03	3	37	50	2344/2057/2113	1347/1060/1116	997	142/172/192	213	110/113/138	45	155/158/183
SPS 125/04	4	45	60	2292/2354	1139/1201	1153	172/192	213	127/152	52	179/204
SPS 125/05.B3	5	52	70	2527/2595	1218/1286	1309	172/192	213	138/170	58	196/228
SPS 125/05	5	55	75	2559/2595	1250/1286	1309	172/192	213	138/170	58	196/228
SPS 125/06	6	67	90	2831	1366	1465	192	213	186	65	251
SPS 125/07	7	75	100	3011	1391	1620	192	213	195	71	266
SPS 125/08	8	92	125	3312/3206	1536/1430	1776	192/231	213	212/284	78	290/362
SPS 125/10	10	110	150	3597	1510	2087	231	213	311	91	402
SPS 125/12	12	129	175	4009	1610	2399	231	213	338	104	442
SPS 125/13	13	147	200	4294	1740	2554	231	213	370	110	480

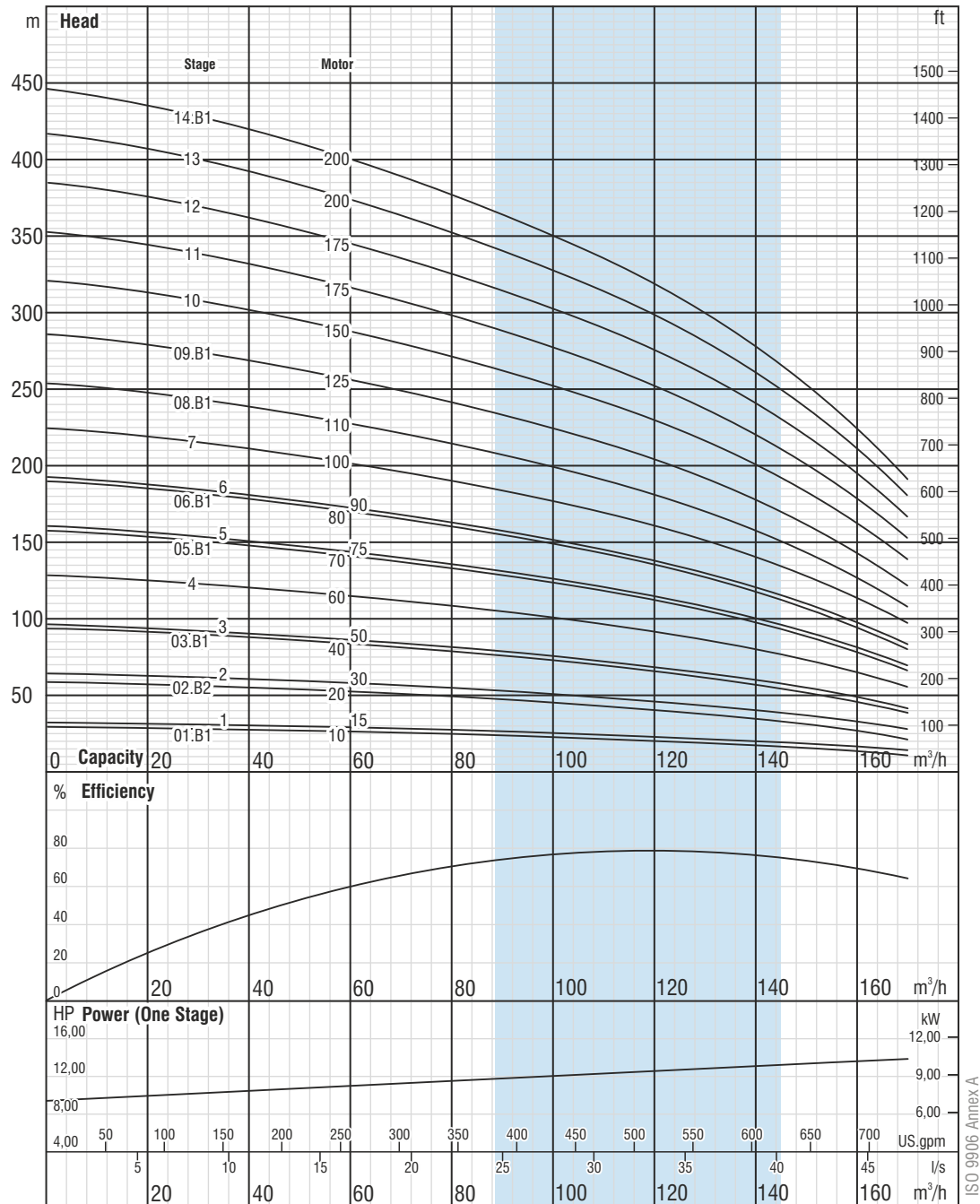
SPS 125 Performance Table

Product Code	Stage	Motor		Current	m³/h	Head (meter)									
		kW	HP			0	40	90	120	130	140	150	160	170	
SPS 125/01.B1	1	9,3	12,5	20,8	0	29	27	24	20	19	17	15	13	11	
SPS 125/01	1	11	15	23,7	0	32	30	26	23	22	20	18	16	14	
SPS 125/02.B2	2	18,5	25	41,8	0	59	55	47	40	38	34	31	26	21	
SPS 125/02	2	22	30	48,5	0	64	60	52	46	43	40	37	33	28	
SPS 125/03.B1	3	30	40	61,7	0	88	82	71	61	57	52	46	39	32	
SPS 125/03	3	37	50	74,3	0	96	91	79	69	65	60	55	49	42	
SPS 125/04	4	45	60	90,4	0	128	121	105	92	86	80	73	65	56	
SPS 125/05.B3	5	52	70	103,3	0	152	143	123	107	100	92	83	72	60	
SPS 125/05	5	55	75	110,5	0	160	151	131	115	108	100	92	81	70	
SPS 125/06	6	67	90	134,6	0	192	181	157	138	130	120	110	98	83	
SPS 125/07	7	75	100	150,7	0	225	211	183	161	151	140	128	114	97	
SPS 125/08	8	92	125	179	0	257	241	210	184	173	161	146	130	111	
SPS 125/10	10	110	150	216	0	321	302	262	230	216	201	183	163	139	
SPS 125/12	12	129	175	248	0	385	362	315	275	259	241	220	195	167	
SPS 125/13	13	147	200	282	0	417	392	341	298	281	261	238	211	181	



Well Stainless Steel Submersible Pumps

SPS 125 Performance Curve (01 to 14 stage)



The right to change design and all specifications without prior notice reserved.

SPS 125 - 50Hz

Features

- Rpm :2900
- Rotation :CCW
- Maximum sand content is 50 gr/m³
- 6" inside threaded outlet connection diameter

Materials

Diffuser & Impeller:
AISI 304L - Stainless Steel

Pump Shaft / Coupling:
AISI 420 - Stainless Steel

Strainer:
AISI 304 - Stainless Steel

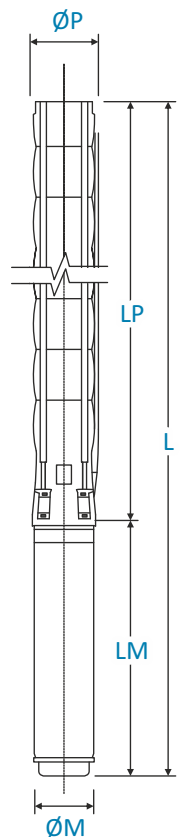
Technical Datasheets

SPS 160 Dimension and Weight Table

Product Code	Stage	Motor		Dimensions					Weight		
		kW	HP	L	LM	LP	ØM	ØP	Motor	Pump	Total
SPS 160/01.B1	1	9,3	12,5	1486	800	686	142	226	55	34	89
SPS 160/01	1	11	15	1537	851	686	142	226	60	34	94
SPS 160/02.B2	2	18,5	25	1848	1006	842	142	226	76	40	116
SPS 160/02	2	22	30	1948/1732	1106/890	842	142/172	226	87/86	40	127/126
SPS 160/03.B2	3	30	40	2244/1977/2053	1247/980/1056	997	142/172/192	226	103/103/129	47	150/150/176
SPS 160/03	3	37	50	2344/2057/2113	1347/1060/1116	997	142/172/192	226	110/113/138	47	157/160/185
SPS 160/04	4	45	60	2292/2354	1139/1201	1153	172/192	226	127/152	53	180/205
SPS 160/05	5	55	75	2559/2595	1250/1286	1309	172/192	226	138/170	60	198/230
SPS 160/06.B3	6	60	80	2806	1341	1465	192	226	185	66	251
SPS 160/06	6	67	90	2831	1366	1465	192	226	186	66	252
SPS 160/07.B3	7	75	100	3011	1391	1620	192	226	195	73	268
SPS 160/07	7	81	110	3091/2990	1471/1370	1620	192/231	226	210/256	73	283/329
SPS 160/08	8	92	125	3312/3206	1536/1430	1776	192/231	226	212/284	79	291/363
SPS 160/09	9	110	150	3442	1510	1932	231	226	311	86	397
SPS 160/10	10	110	150	3597	1510	2087	231	226	311	92	403

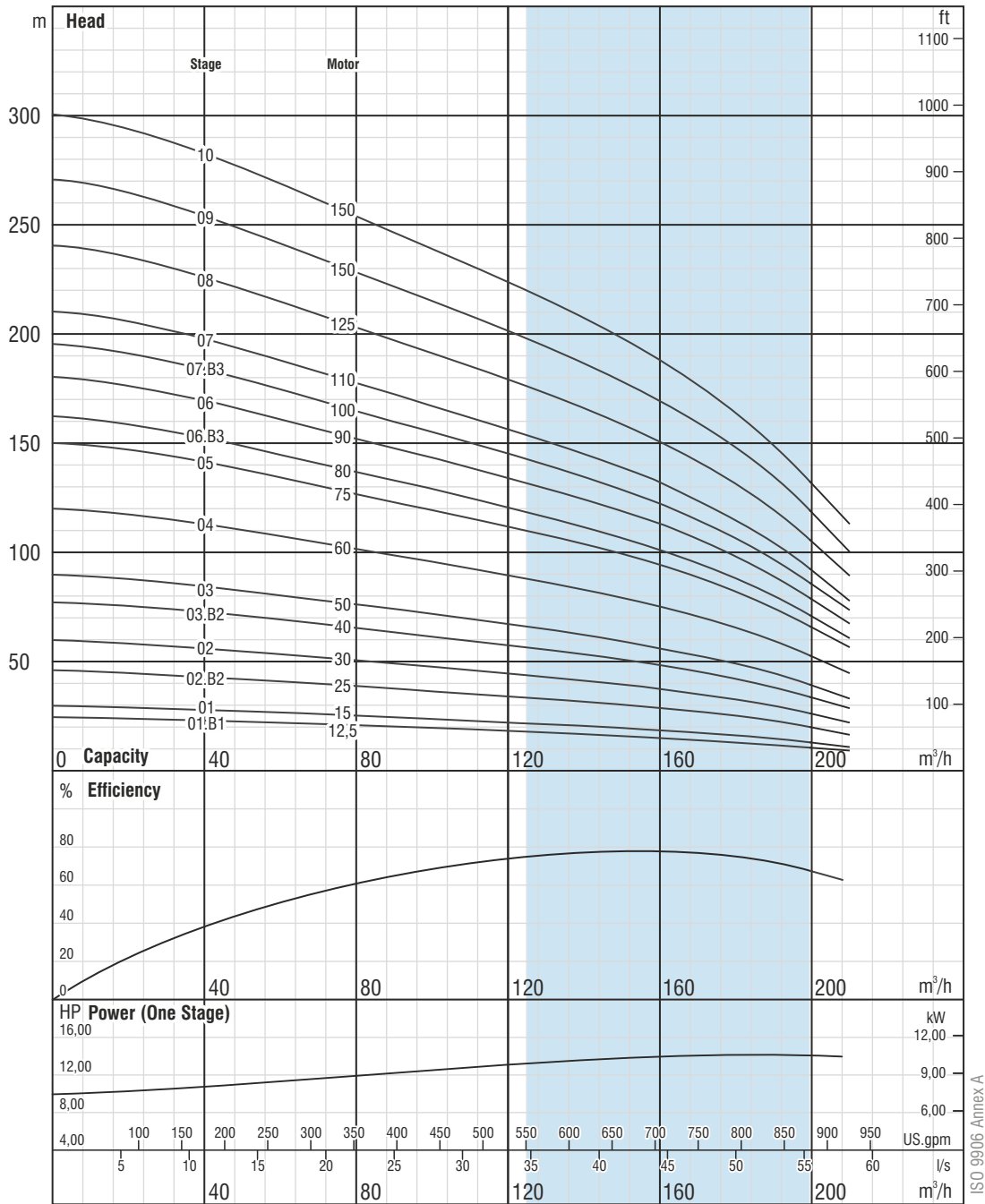
SPS 160 Performance Table

Product Code	Stage	Motor		Current	m³/h	Head (meter)							
		kW	HP			0	80	100	120	140	160	180	200
SPS 160/01.B1	1	9,3	12,5	20,8	0	25	21	20	19	17	16	14	11
SPS 160/01	1	11	15	23,7	0	30	25	24	22	21	19	16	13
SPS 160/02.B2	2	18,5	25	41,8	0	46	39	37	34	32	29	25	20
SPS 160/02	2	22	30	48,5	0	60	51	48	45	41	38	33	26
SPS 160/03.B2	3	30	40	61,7	0	77	65	61	58	53	49	42	34
SPS 160/03	3	37	50	74,3	0	90	76	72	67	62	57	49	40
SPS 160/04	4	45	60	90,4	0	120	101	96	89	83	75	66	53
SPS 160/05	5	55	75	110,5	0	150	127	119	112	104	94	82	66
SPS 160/06.B3	6	60	80	119,1	0	162	137	129	121	112	102	89	71
SPS 160/06	6	67	90	134,6	0	180	152	143	134	124	113	99	79
SPS 160/07.B3	7	75	100	150,7	0	195	165	155	145	135	123	107	86
SPS 160/07	7	81	110	159	0	210	178	167	157	145	132	115	92
SPS 160/08	8	92	125	179	0	240	203	191	179	166	151	132	106
SPS 160/09	9	110	150	216	0	270	228	215	201	187	170	148	119
SPS 160/10	10	110	150	216	0	300	254	239	224	207	189	165	132



Well Stainless Steel Submersible Pumps

SPS 160 Performance Curve (01 to 10 stage)



The right to change design and all specifications without prior notice reserved.

SPS 160 - 50Hz

Features

- Rpm :2900
- Rotation :CCW
- Maximum sand content is 50 gr/m³
- 6" inside threaded outlet connection diameter

Materials

Diffuser & Impeller:
AISI 304L - Stainless Steel

Pump Shaft / Coupling:
AISI 420 - Stainless Steel

Strainer:
AISI 304 - Stainless Steel

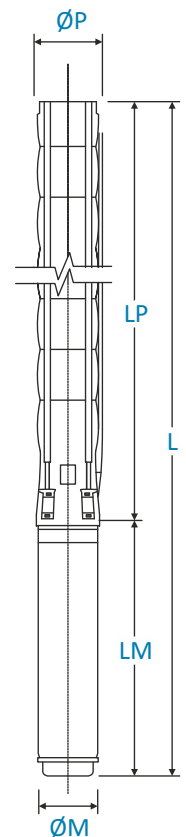
Technical Datasheets

SPS 160 Dimension and Weight Table

Product Code	Stage	Motor		Dimensions					Weight		
		kW	HP	L	LM	LP	ØM	ØP	Motor	Pump	Total
SPS 160/11	11	129	175	3853	1610	2243	231	226	338	99	437
SPS 160/12	12	147	200	4139	1740	2399	231	226	370	105	475
SPS 160/13	13	147	200	4294	1740	2554	231	226	370	112	482
SPS 160/14	14	166	225	4530	1820	2710	231	226	400	118	518
SPS 160/15	15	185	250	4686	1820	2866	231	226	405	124	529
SPS 160/16	16	185	250	4842	1820	3022	231	226	405	131	536

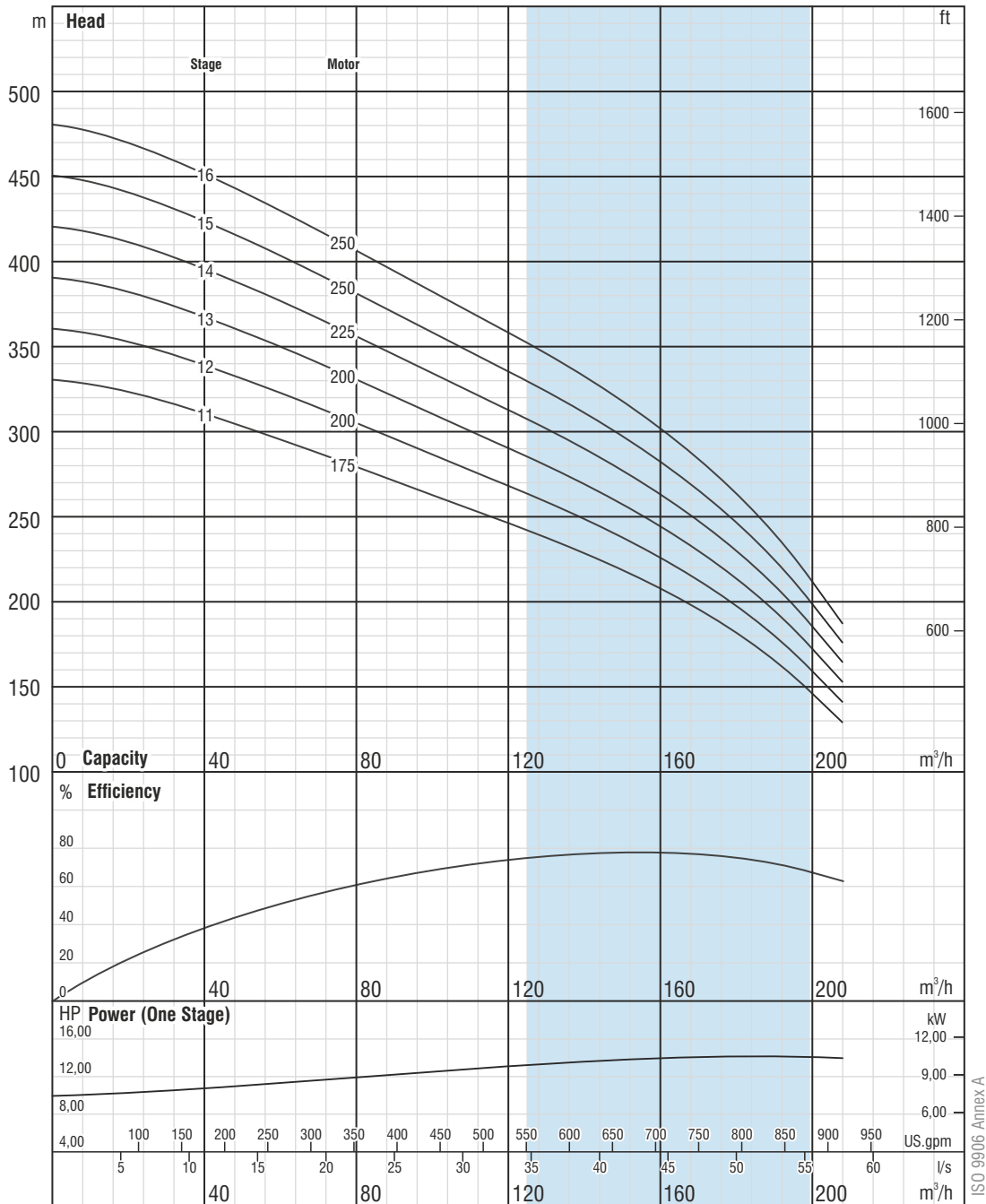
SPS 160 Performance Table

Product Code	Stage	Motor		Current	m ³ /h	Head (meter)								
		kW	HP			I/s	0	80	100	120	140	160	180	200
							0	22,2	27,8	33,3	38,9	44,4	50	55,6
SPS 160/11	11	129	175	248	330	279	263	246	228	207	181	145		
SPS 160/12	12	147	200	282	360	304	287	268	249	226	197	158		
SPS 160/13	13	147	200	282	391	330	310	291	270	245	214	172		
SPS 160/14	14	166	225	322	421	355	334	313	290	264	230	185		
SPS 160/15	15	185	250	359	451	381	358	335	311	283	247	198		
SPS 160/16	16	185	250	359	481	406	382	358	332	302	263	211		



Well Stainless Steel Submersible Pumps

SPS 160 Performance Curve (11 to 16 stage)



The right to change design and all specifications without prior notice reserved.

SPS 160 - 50Hz

Features

- Rpm :2900
- Rotation :CCW
- Maximum sand content is 50 gr/m³
- 6" inside threaded outlet connection diameter

Materials

Diffuser & Impeller:
AISI 304L - Stainless Steel

Pump Shaft / Coupling:
AISI 420 - Stainless Steel

Strainer:
AISI 304 - Stainless Steel

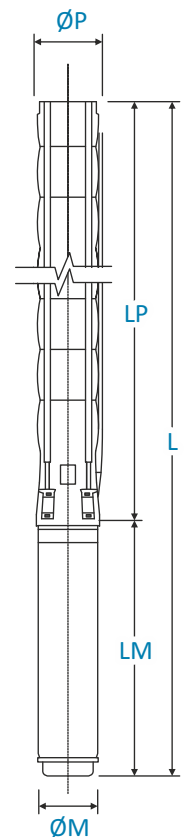
Technical Datasheets

SPS 210 Dimension and Weight Table

Product Code	Stage	Motor		Dimensions					Weight		
		kW	HP	L	LM	LP	ØM	ØP	Motor	Pump	Total
SPS 210/01.B1	1	15	20	1767	973	794	1-	247	72	44	116
SPS 210/01	1	18,5	25	1800	1006	794	42	247	76	44	120
SPS 210/01.B3	1	22	30	1900	1106	794	142	247	87	44	131
SPS 210/02.B2	2	30	40	2217/1950/2026	1247/980/1056	970	142/172/192	247	103/103/129	55	158/158/184
SPS 210/02	2	37	50	2317/2030/2086	1347/1060/1116	970	142/172/192	247	110/113/138	55	165/168/193
SPS 210/03.B3	3	45	60	2286/2348	1139/1201	1147	172/192	247	127/152	66	193/218
SPS 210/03.B1	3	55	75	2397/2433	1250/1286	1147	172/192	247	138/170	66	204/236
SPS 210/04.B2	4	67	90	2689	1366	1323	192	247	186	76	262
SPS 210/04	4	75	100	2714	1391	1323	192	247	195	76	271
SPS 210/05	5	92	125	3035/2929	1536/1430	1499	192/231	247	212/284	87	299/371
SPS 210/06	6	110	150	3185	1510	1675	231	247	311	98	409
SPS 210/07	7	129	175	3461	1610	1851	231	247	338	109	447
SPS 210/08	8	150	200	3768	1740	2028	231	247	370	119	489
SPS 210/09	9	166	225	4024	1820	2204	231	247	400	130	530
SPS 210/10	10	185	250	4200	1820	2380	231	247	405	141	546

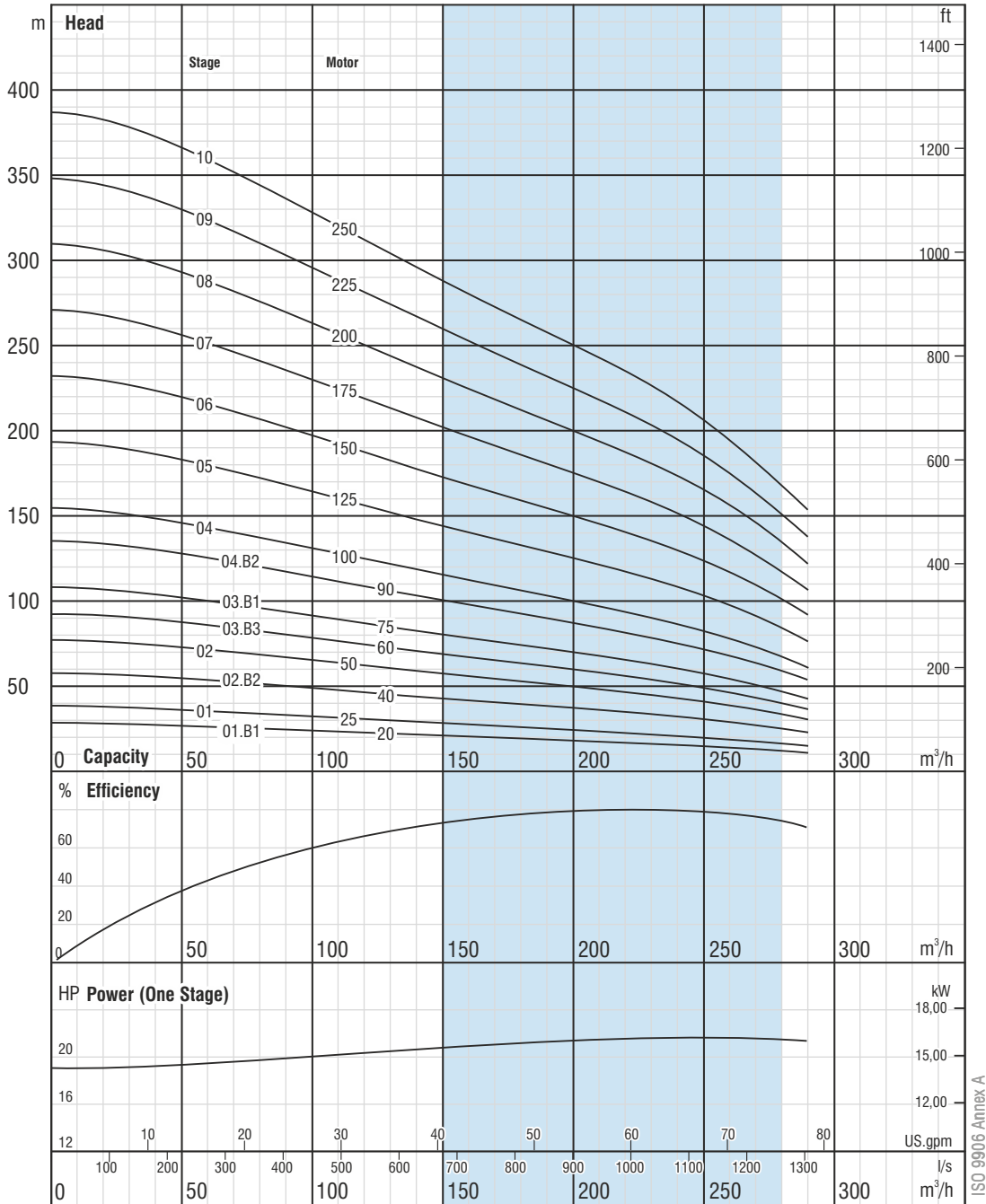
SPS 210 Performance Table

Product Code	Stage	Motor		Current	m³/h	Head (meter)									
		kW	HP			0	100	140	180	200	220	240	260	290	
SPS 210/01.B1	1	15	20	33,1	0	29	25	22	20	19	18	16	15	11	
SPS 210/01	1	18,5	25	41,8	0	39	33	30	27	25	23	22	19	15	
SPS 210/01.B3	1	22	30	41,8	0	39	33	30	27	25	23	22	19	15	
SPS 210/02.B2	2	30	40	61,7	0	58	49	44	40	38	35	32	29	23	
SPS 210/02	2	37	50	74,3	0	77	66	59	53	50	47	43	39	31	
SPS 210/03.B3	3	45	60	90,4	0	93	79	71	64	60	56	52	47	37	
SPS 210/03.B1	3	55	75	110,5	0	108	92	83	74	70	66	61	55	43	
SPS 210/04.B2	4	67	90	134,6	0	136	115	104	93	88	82	76	68	54	
SPS 210/04	4	75	100	150,7	0	155	131	119	106	100	94	87	78	61	
SPS 210/05	5	92	125	179	0	194	164	148	133	125	117	108	97	76	
SPS 210/06	6	110	150	216	0	232	197	178	160	150	141	130	117	92	
SPS 210/07	7	129	175	248	0	271	230	208	186	175	164	151	136	107	
SPS 210/08	8	150	200	282	0	310	263	237	213	201	188	173	156	122	
SPS 210/09	9	166	225	322	0	349	296	267	239	226	211	195	175	138	
SPS 210/10	10	185	250	359	0	387	329	297	266	251	235	216	195	153	



Well Stainless Steel Submersible Pumps

SPS 210 Performance Curve (01 to 10 stage)



The right to change design and all specifications without prior notice reserved.

SPS 210 - 50Hz

Features

- Rpm :2900
- Rotation :CCW
- Maximum sand content is 50 gr/m³
- 6" inside threaded outlet connection diameter

Materials

Diffuser & Impeller:
AISI 304L - Stainless Steel

Pump Shaft / Coupling:
AISI 420 - Stainless Steel

Strainer:
AISI 304 - Stainless Steel

Notes

A series of horizontal dashed lines for writing notes.



The right to change design and all specifications without prior notice reserved.

HIGH TECHNOLOGY FOR LIFE

